



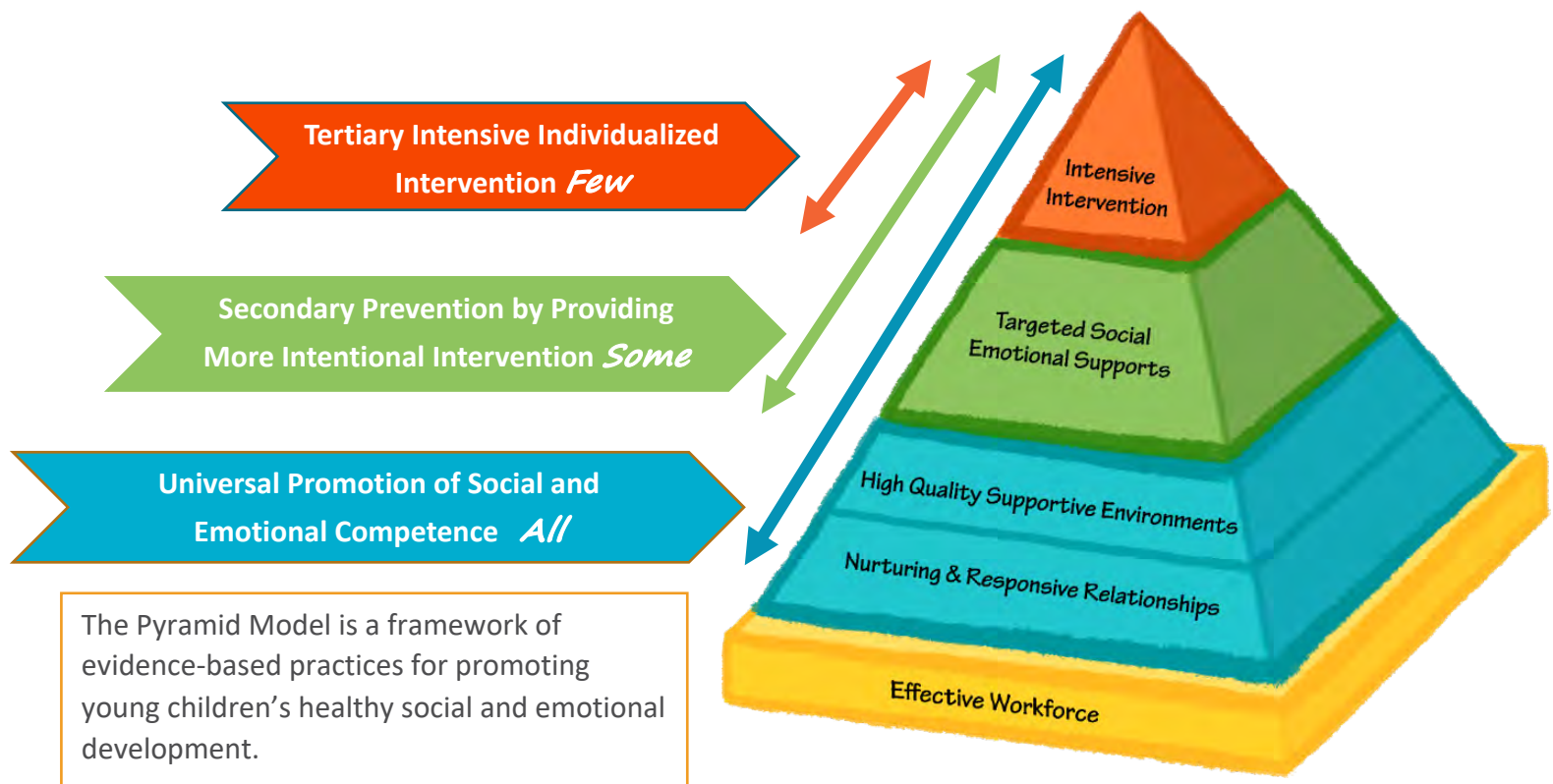
03/20/2024

Responding in the Moment to Behaviors That Challenge Adults

Viewer's Guide

This viewer's guide gives you ideas, steps, and possible strategies you can guide coachees to use when children engage in behaviors that challenge adults. The reflection questions and activities will help you think about ways to support each coachee's learning about these practices and strategies. You can also use the guide to note which strategies you want to try out or information you want to share with a colleague. There will also be opportunities for you to reflect on your own practice as a coach. Helpful resources can be found in the Resources section of this guide.

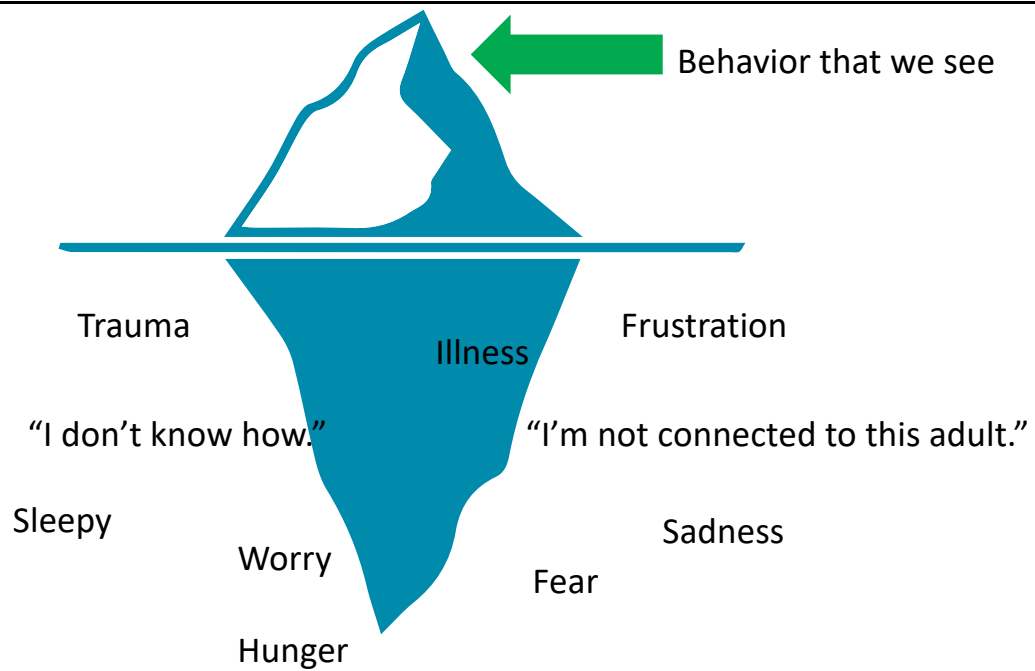
Pyramid Model



National Center on
Early Childhood Development, Teaching, and Learning

This training was supported by the Administration for Children and Families (ACF) of the United States (U.S.) Department of Health and Human Services (HHS) as part of a financial assistance award totaling \$10,200,000 with 100% funded by ACF. The contents are those of the author(s) and do not necessarily represent the official views of, nor an endorsement, by ACF/HHS, or the U.S. Government. This resource may be duplicated for noncommercial uses without permission.

Behavior Is Communication



What other things might behavior be communicating to us?



Mindful Moment

Interview with Dr. Mary Louise Hemmeter

What strategies can a coach support a coachee to use when challenging behavior occurs?


Three Essential Strategies for Responding to Behavior:

1. Use developmentally appropriate strategies such as:
 - a. Redirection
 - b. Planned ignoring
2. Respond to the child by stating the expected behavior in positive terms or providing an acceptable alternative.
3. Provide positive attention or positive descriptive feedback when the child engages in appropriate behavior.

Redirection Strategies and Examples to Remember:



Planned Ignoring Strategies and Examples to Remember:



***Remember... Planned Ignoring Is
Ignoring the Behavior, NOT the Child.***

Are there any other strategies a coach might recommend a coachee use in the moment?

*"The use of these response strategies is intended to reduce the likelihood of challenging behavior but will not be effective without **careful and intentional attention to teaching social skills and emotional competencies.**"*

-Strain, Joseph, Hemmeter, Barton, & Fox (2017)



Coaching and Practice



Look for the Essential 3! Does the teacher:

Essential Strategies	Yes	No
1. Use developmentally appropriate strategies?		
2. Respond to the child by stating the expected behavior in positive terms or providing an acceptable alternative?		
3. Provide positive attention or positive descriptive feedback when the child behaves appropriately?		

Focus on Equity

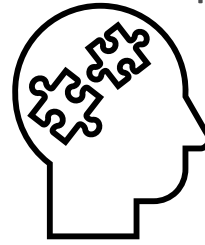
Our...

Culture

Values

Beliefs

Shape...



How we view and respond to...

Behavior

Koko's Corner



The Head Start Coaching Companion is a video-sharing and coaching-feedback application for early care and education staff and providers. It helps coaches, coachees, and peer-coaching teams work together, even between coach visits or from a distance. Share video files, ask questions, exchange feedback, and develop individualized coaching plans that support quality teaching and positive outcomes for young children.

To login or join the Head Start Coaching Companion click here:
<https://eclkc.ohs.acf.hhs.gov/professional-development/head-start-coaching-companion/head-start-coaching-companion>

For more information, contact coachingcompanion@eclkc.info

Helpful Resources

Online Resources

The Practice-Based Coaching Coach Competencies
<https://eclkc.ohs.acf.hhs.gov/sites/default/files/pdf/psc-coach-competencies.pdf>

Preschool Module 5: Addressing Challenging Behavior

<https://challengingbehavior.org/document/preschool-module-5-addressing-challenging-behavior/>

Infant-Toddler Module 8: Challenging Behavior

<https://challengingbehavior.org/document/infant-toddler-modul-8-challenging-behavior/>

Coaching Corner Webinar Series

<https://eclkc.ohs.acf.hhs.gov/professional-development/article/coaching-corner-series>

- Coaching to Support Social and Emotional Skills
- Coaching to Support Emotional Literacy and Expression
- Coaching to Support Friendship Skills and Problem-solving
- The ABCs of Addressing Persistent Challenging Behavior
<https://eclkc.ohs.acf.hhs.gov/video/abcs-addressing-persistent-challenging-behavior>

Teacher Time Webinar Series

- Positive Behavior Support, Birth to 5
<https://eclkc.ohs.acf.hhs.gov/teaching-practices/teacher-time-series/positive-behavior-support-birth-5>

Hot Buttons Activity

<https://challengingbehavior.org/document/hot-buttons-activity/>

Behavior Intervention and Positive Behavior Support

<https://challengingbehavior.org/pyramid-model/behavior-intervention/pbs/>

Understanding and Managing Children's Behaviors: Individual Support Plans (ISP) (English and Spanish)

<https://eclkc.ohs.acf.hhs.gov/mental-health/article/understanding-managing-childrens-behaviors-individual-support-plans-isp>

Circle Time Magazine: Episode 5 Addressing Challenging Behavior

<https://cultivatelearning.uw.edu/circle-time-magazine/season-2/episode-5/>

Family Routine Based Support Guide (Infants and Toddlers)

https://challengingbehavior.org/docs/RoutineSupportGuide_family_relationships-infants.pdf

Family Routine Based Support Guide (4-to-8-year-olds)

https://challengingbehavior.org/docs/RoutineSupportGuide_family_early-elementary.pdf

Equity Coaching Guide

<https://challengingbehavior.org/implementation/equity/coaching-guide/>

Mobile Apps

Inclusion Lab App

<https://eclkc.ohs.acf.hhs.gov/children-disabilities/article/inclusion-lab-app>

ELOF2GO Mobile App (English and Spanish)

<https://eclkc.ohs.acf.hhs.gov/school-readiness/article/elof2go-mobile-app>

ELOF@Home

<https://eclkc.ohs.acf.hhs.gov/teaching-practices/article/mobile-tools-home-visitors>

Text4Teachers (English and Spanish)

<https://eclkc.ohs.acf.hhs.gov/teaching-practices/article/text4teachers>

Text4HomeVisitors (English and Spanish)

<https://eclkc.ohs.acf.hhs.gov/teaching-practices/article/mobile-tools-home-visitors>

Ready DLL Mobile App

<https://eclkc.ohs.acf.hhs.gov/culture-language/article/ready-dll-mobile-app>

Online Communities

MyPeers: Join the Practice-Based Coaching and Pyramid Model Communities

<https://eclkc.ohs.acf.hhs.gov/about-us/article/mypeers-collaborative-platform-early-care-education-community>