

Office of Head Start
National Center

National Center on
Program Management and Fiscal Operations

Office of Head Start
National Center

National Center on
Parent, Family, and Community Engagement

Foundations of ERSEA

Plenary | April 5, 2022

ERSEA INSTITUTE 2022

1

Interprefy Widget

- Open Interprefy widget. Click on the embedded Interprefy widget **1**.
- Select language. Select your preferred language **2** and click connect **3**.
- Mute webcast. Mute the audio output on the video player **4**.
- Listen to the audio content with interpretation in real-time.

ERSEA Institute 2022

2

2





National Center on
Parent, Family, and Community Engagement




National Center on
Program Management and Fiscal Operations

Presenters



Jacqueline Davis,
NCPMFO



Brandi Black Thacker,
NCPFCE

ERSEA Institute 2022


3

3

Learning Objectives

- Reflect on the key ERSEA moments in Head Start history and how they can inspire our work moving forward
- Examine how the PFCE Framework and Management Systems Wheel (MSW) can be used together to guide ERSEA practices
- Define ERSEA and explore how each letter is embedded in program systems for and with families

ERSEA Institute 2022



4

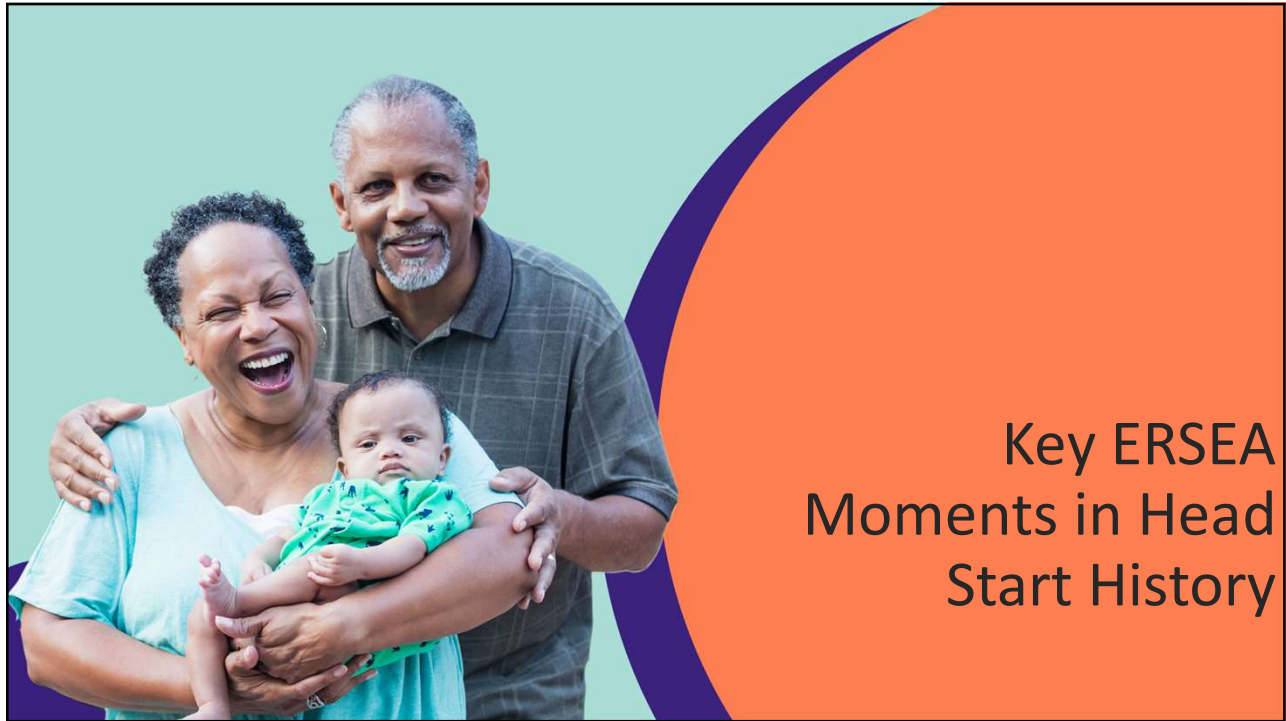
4



National Center on
Parent, Family, and Community Engagement



National Center on
Program Management and Fiscal Operations



Key ERSEA Moments in Head Start History

5

1964: War on Poverty

On January 8, President Lyndon Johnson takes up the cause of building a “Great Society” by declaring “War on Poverty” in his first State of the Union Address.



State of the Union, 1964

ERSEA Institute 2022

6

6



National Center on
Parent, Family, and Community Engagement



National Center on
Program Management and Fiscal Operations

ERSEA INSTITUTE 2022

1966: How to Apply for Head Start

The application requires descriptions of the Policy Advisory committee, the use of Elementary and Secondary Education Act funds; Mobilizing Community Resources; Maintenance of local anti-poverty efforts; administrative staff; health services, social services, and psychological services programs; fiscal responsibility and reports; and program quality improvement.



7

1969: Migrant Head Start

The Migrant Head Start program is begun to ensure that farmworker families and their children can enjoy the same advantages made available to other low-income children through Head Start.



8



National Center on
Parent, Family, and Community Engagement



National Center on
Program Management and Fiscal Operations

1972: Services to Children with Disabilities

Congress amends the Economic Opportunity Act, calling to expand Head Start program opportunities for children with disabilities. The legislation mandates that at least 10 percent of Head Start's national enrollment consists of children with disabilities.



A nurse plays with an infant wearing hearing aids.

1987: McKinney-Vento Act

Congress passes the McKinney-Vento Homeless Assistance Act (renamed in 1990), that requires educational and social services for families experiencing homelessness. Head Start and Early Head Start programs use the definition of homelessness in the Act to automatically enroll eligible children.



1992: Services to Homeless Children

Local Head Start programs are encouraged to target for enrollment those families with preschool-aged children experiencing homelessness (in ACF-IM-92-12).



President Bush plays with children in a jungle gym at the Emily Harris Head Start Center in Catonsville, Maryland, 01/21/1992.

1994: Early Head Start

Congress passes landmark Head Start reauthorization. The most groundbreaking provision was the creation of Early Head Start, establishing services for pregnant women, infants, and toddlers.



Child plays in an Early Head Start classroom.

1995: Fatherhood Initiatives

The federal Fatherhood Initiative brings several key government agencies together to evaluate the role of fathers in national policies and programs.



ERSEA Institute 2022

13

13

A photograph of a family of three. A man in a blue polo shirt is on the left, a woman in a pink shirt is on the right, and a young child in a light blue polo shirt is in the center. They are all smiling and looking towards the camera. The background is a light teal color with a large orange and purple curved graphic on the right side.

The Head Start Parent, Family, and Community Engagement Framework and Management Systems Wheel

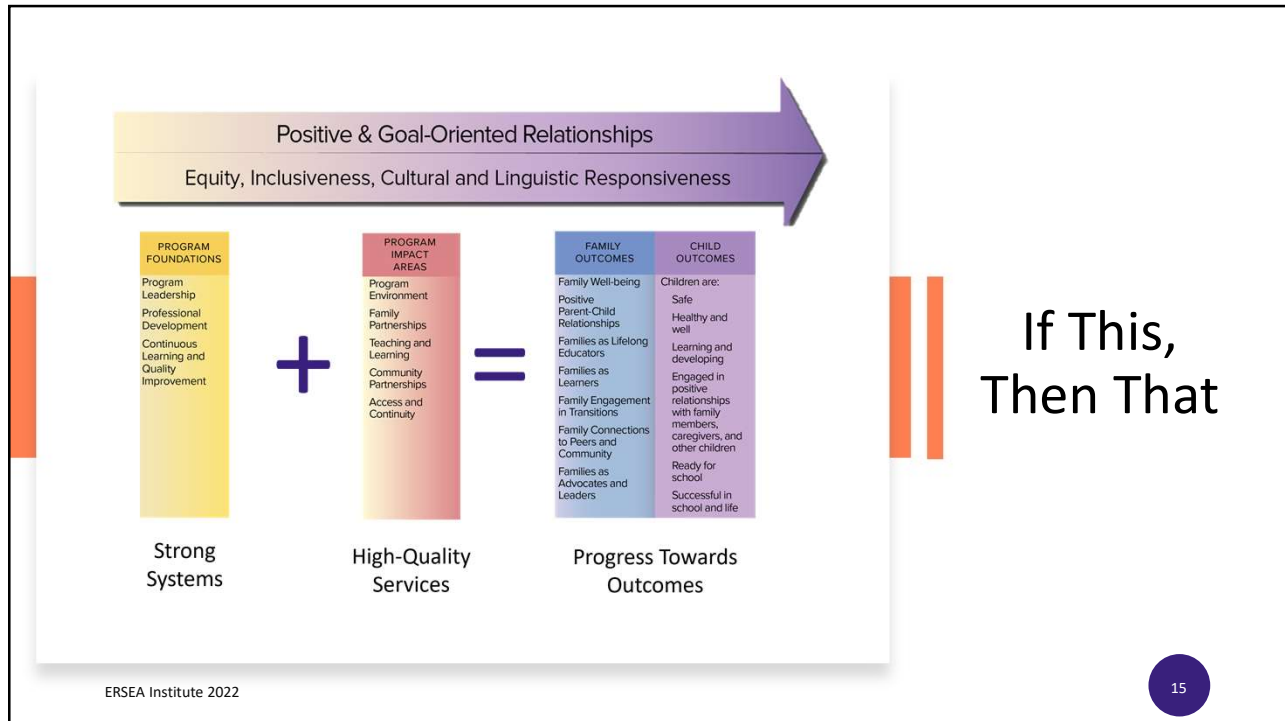
14



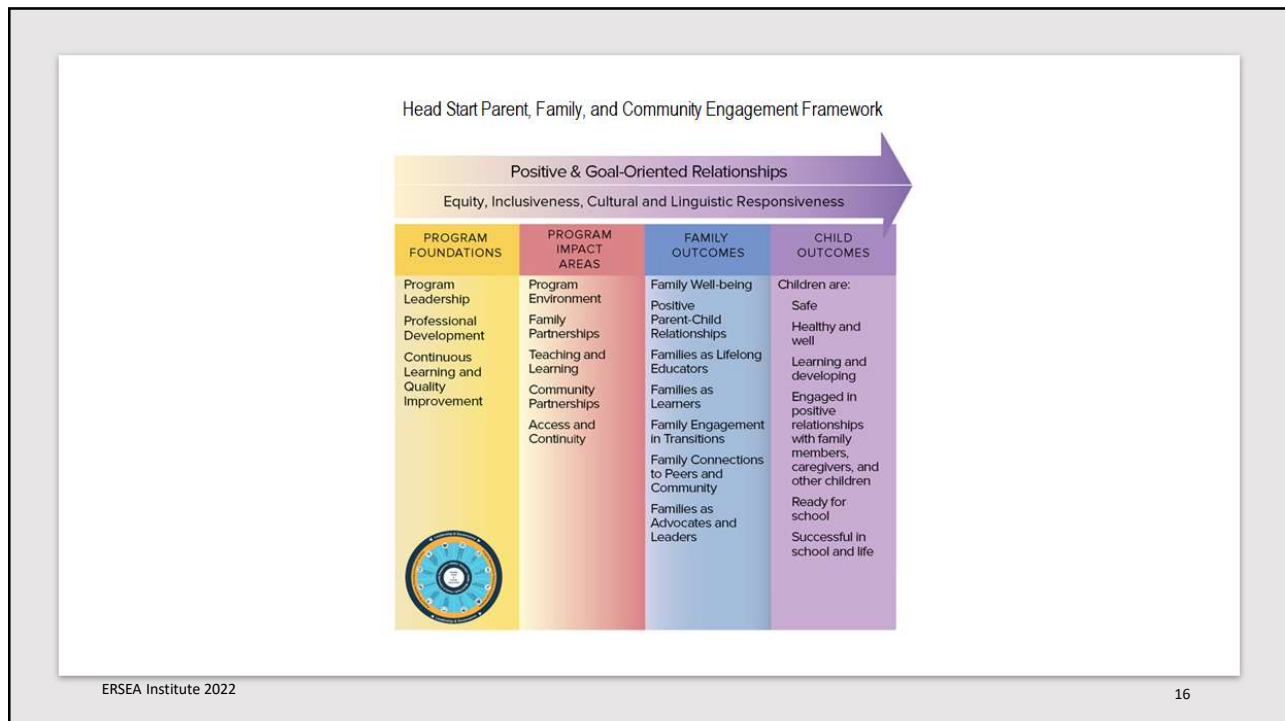
National Center on
Parent, Family, and Community Engagement



National Center on
Program Management and Fiscal Operations



15



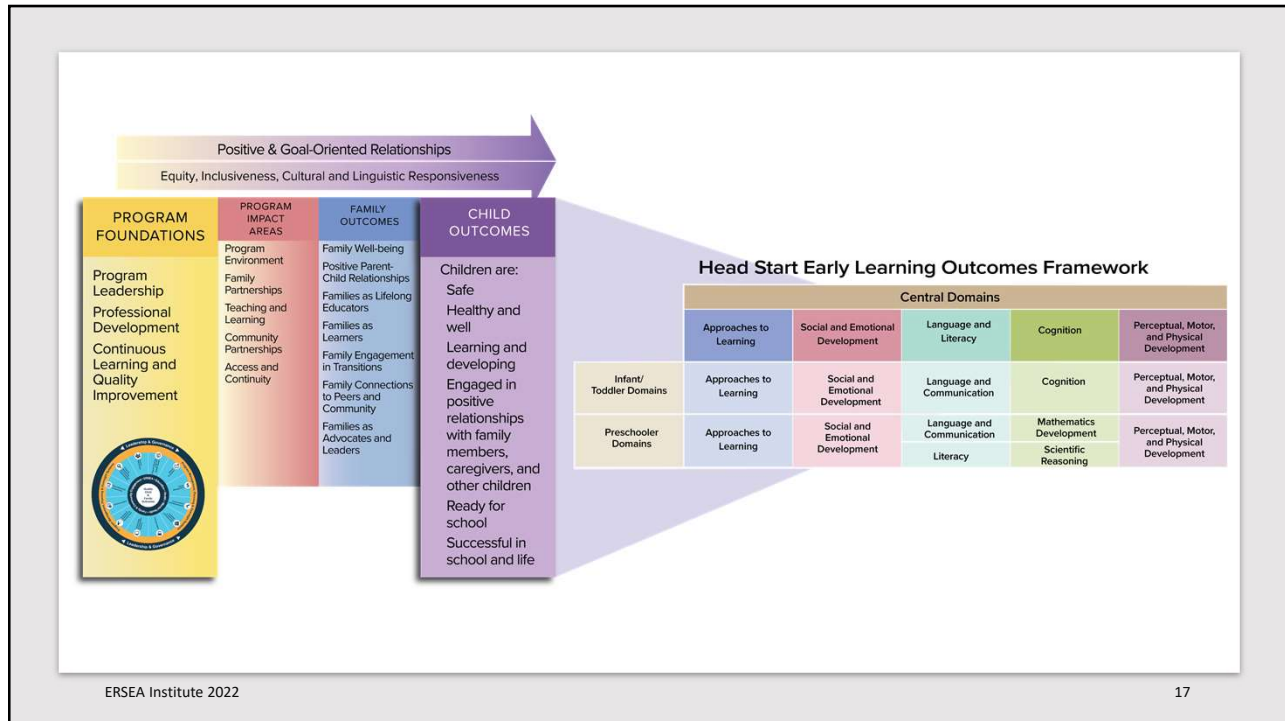
16



National Center on
Parent, Family, and Community Engagement



National Center on
Program Management and Fiscal Operations



17

Systems Message

“. . . collectively, we can be more insightful, more intelligent than we can possibly be individually.”

—Peter Senge, *The Fifth Discipline*, p.221

ERSEA Institute 2022 18

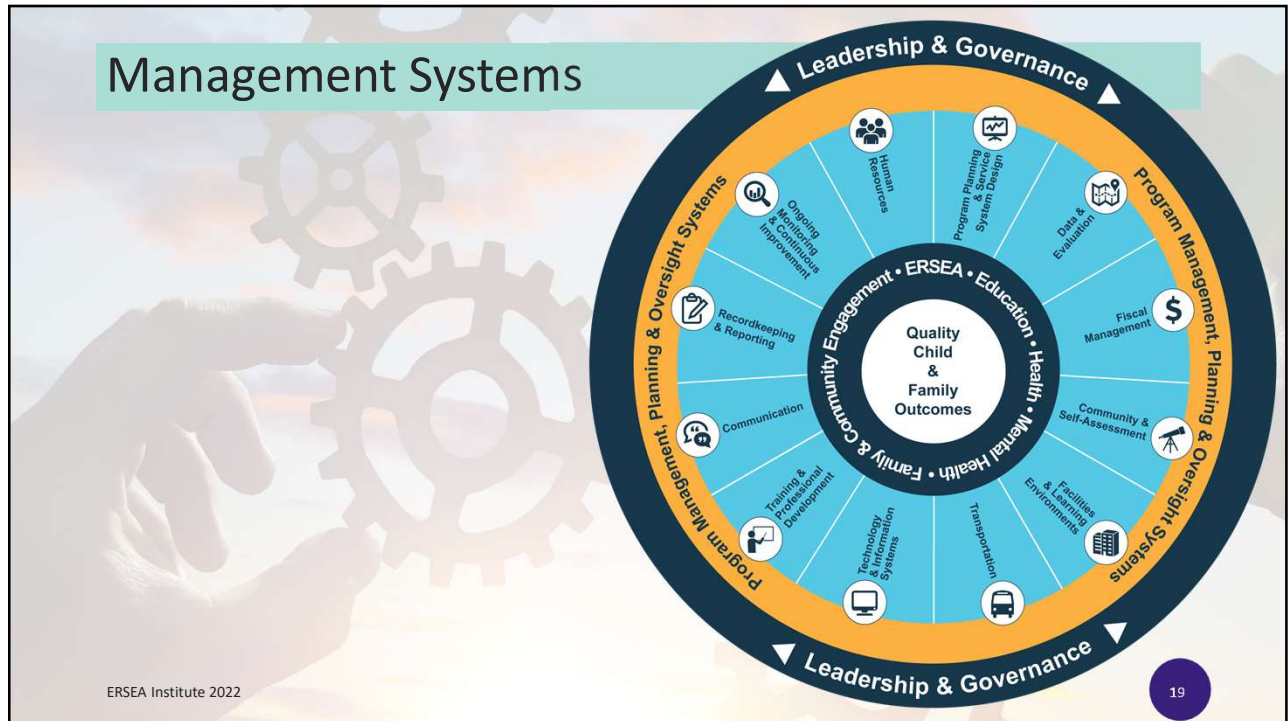
18



National Center on
 Parent, Family, and Community Engagement



National Center on
 Program Management and Fiscal Operations



19



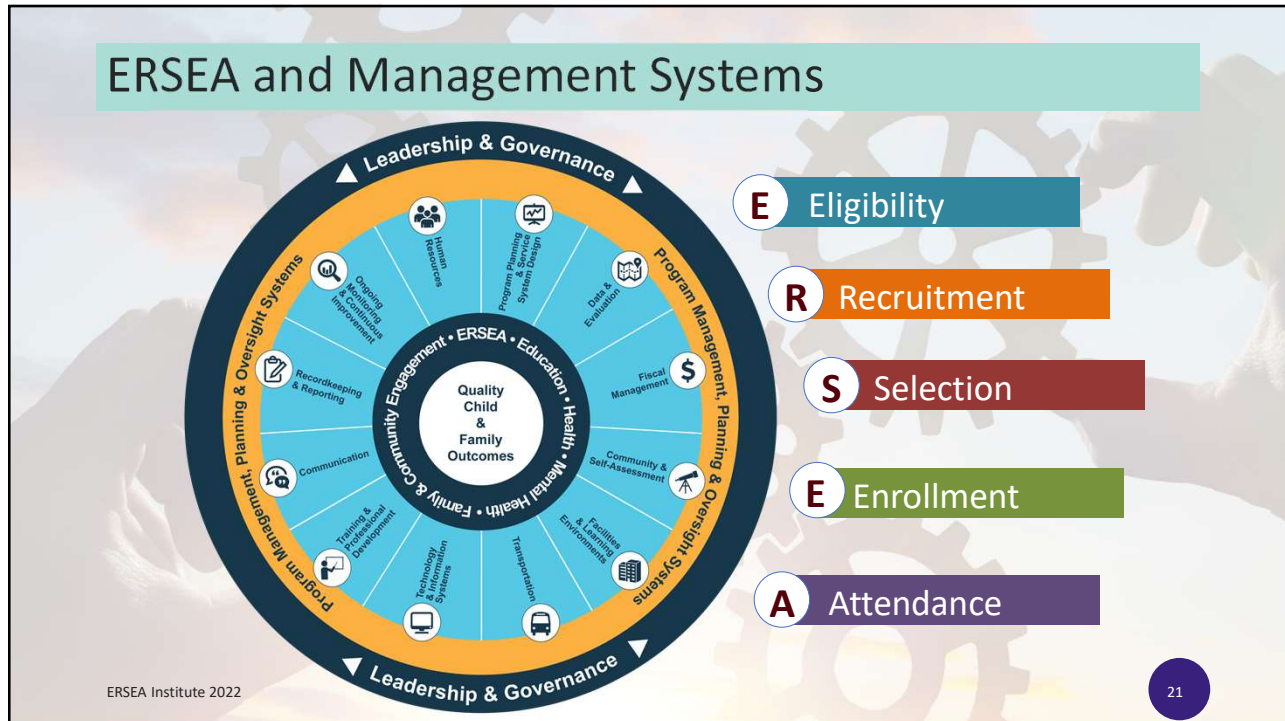
20



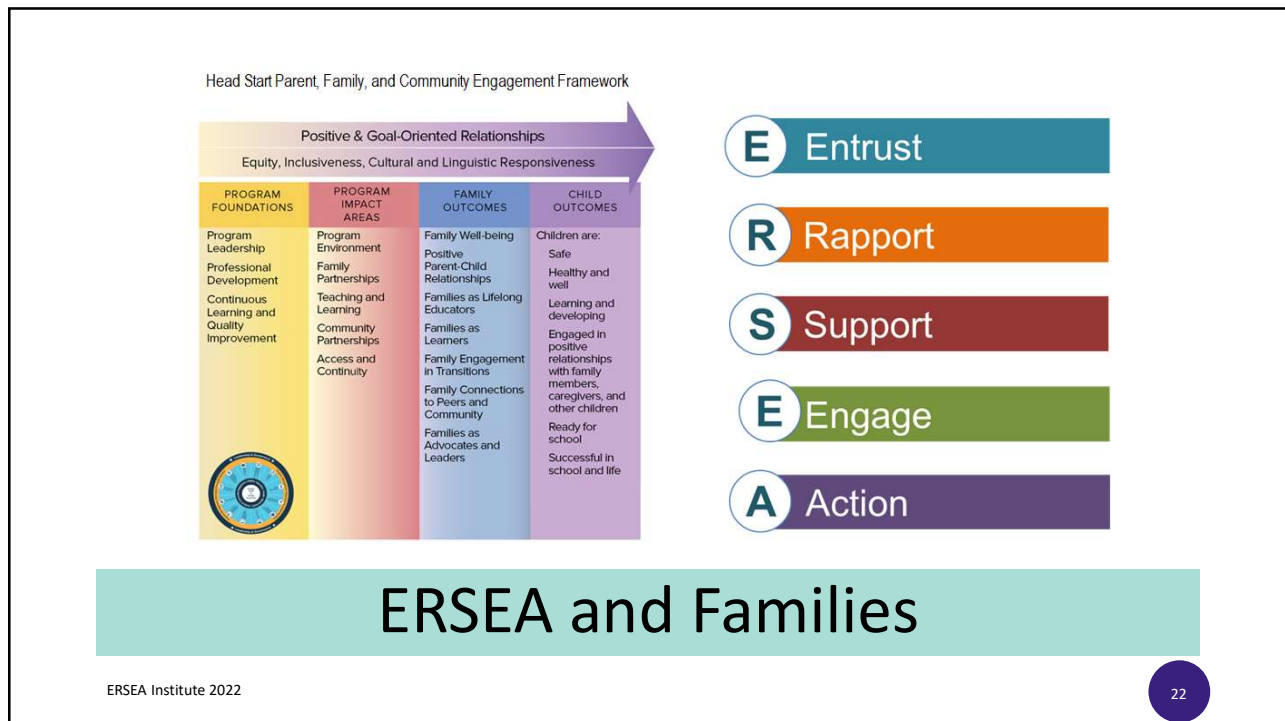
National Center on
Parent, Family, and Community Engagement



National Center on
Program Management and Fiscal Operations



21



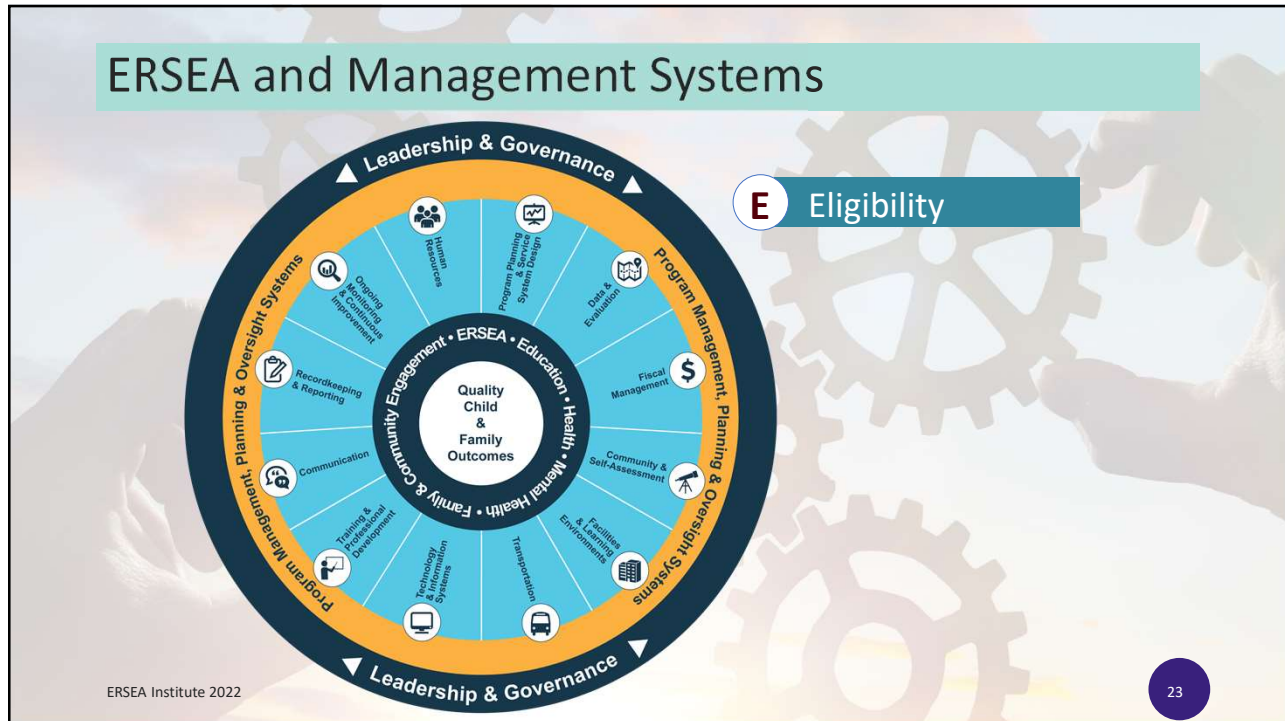
22



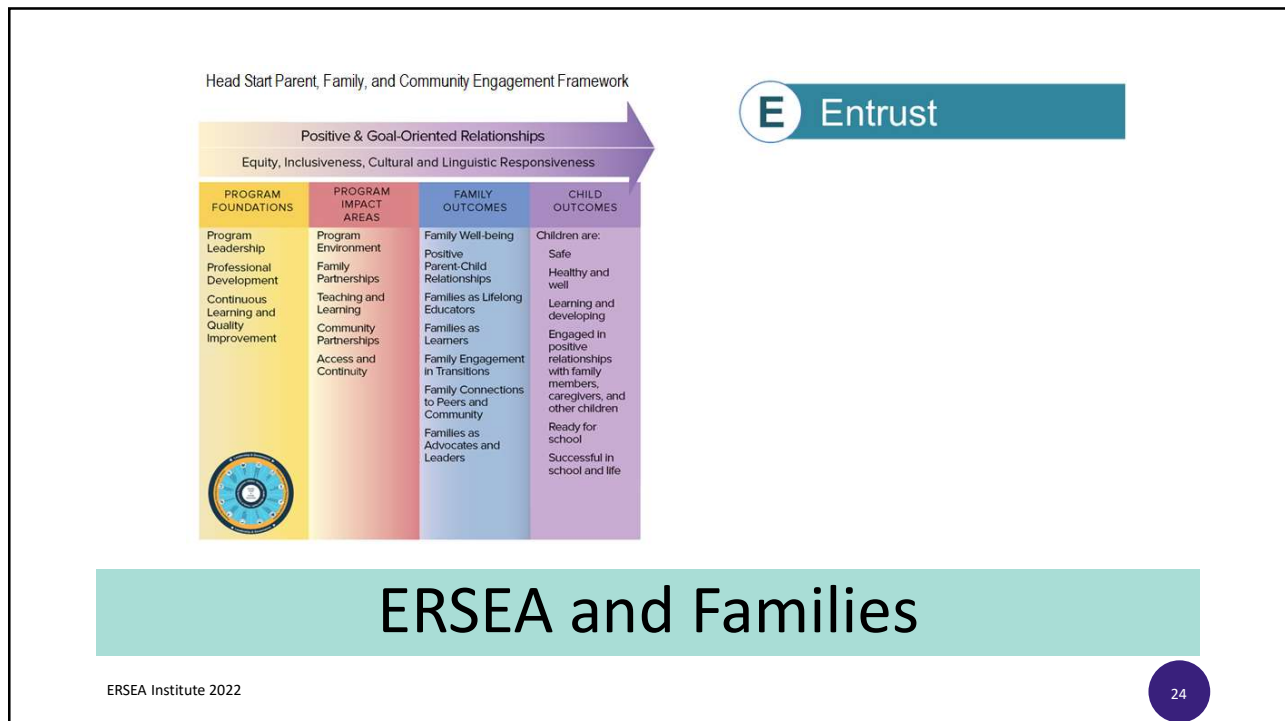
National Center on
Parent, Family, and Community Engagement



National Center on
Program Management and Fiscal Operations



23



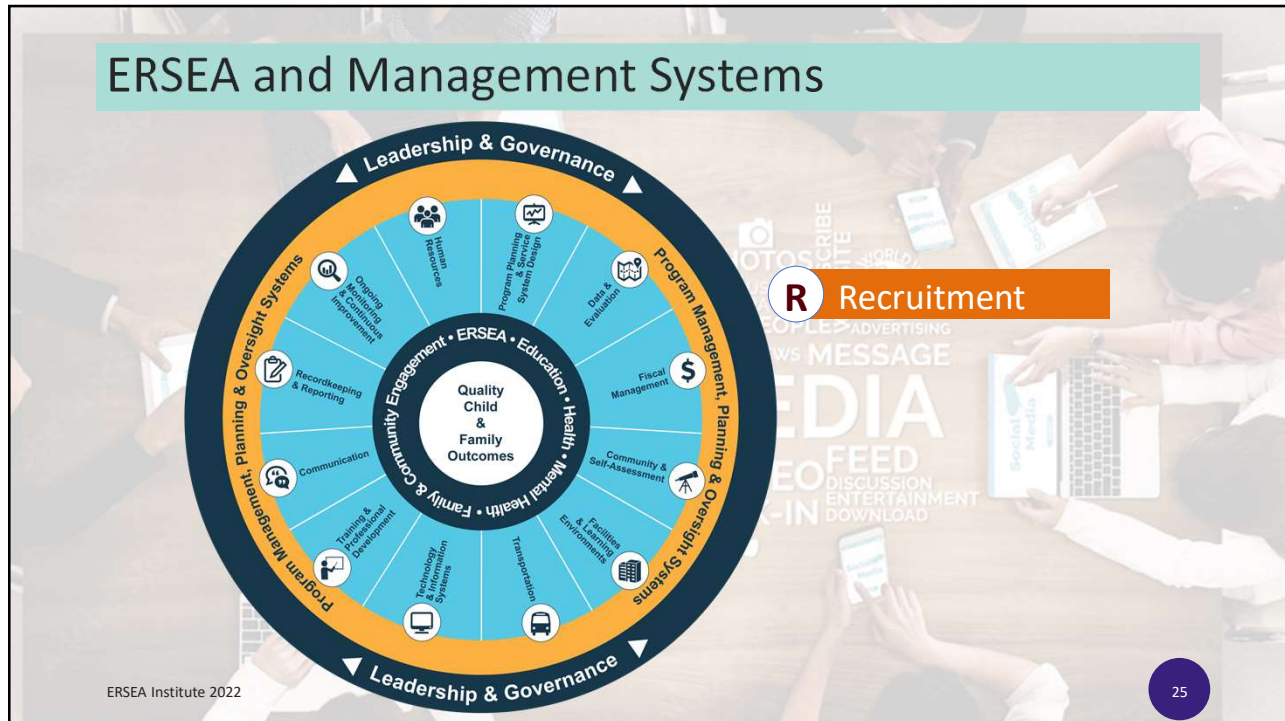
24



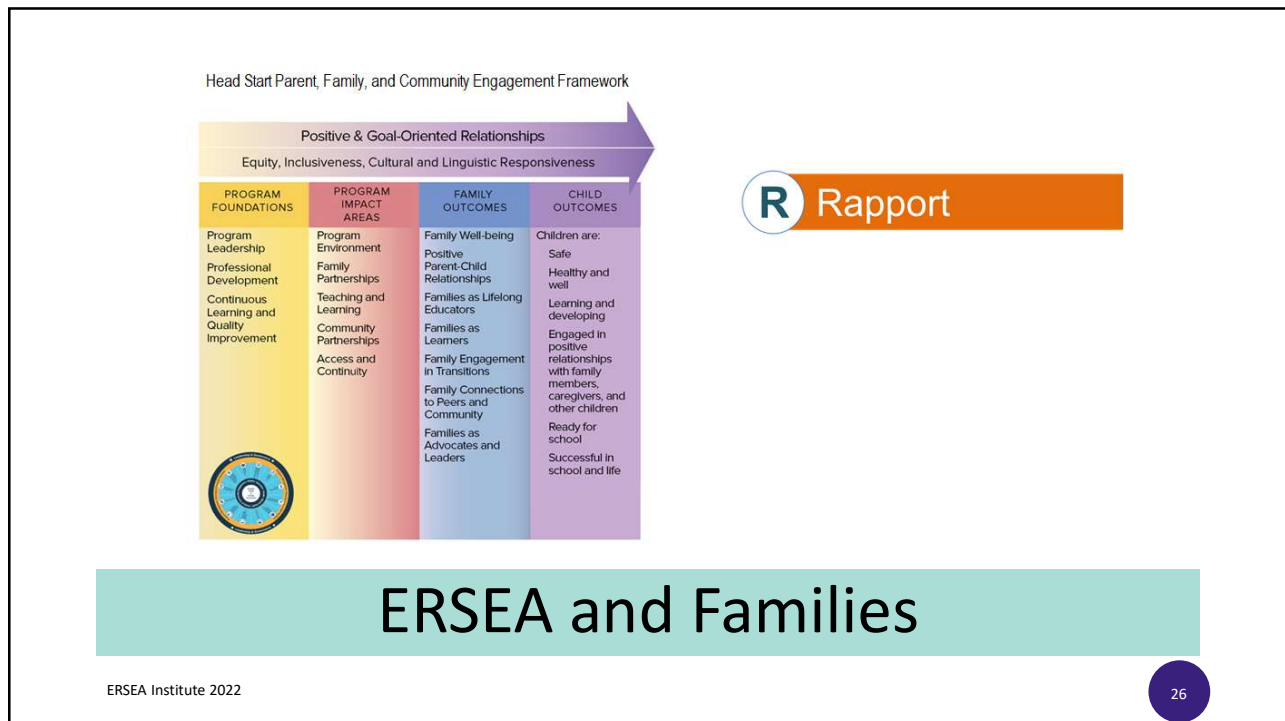
National Center on
Parent, Family, and Community Engagement



National Center on
Program Management and Fiscal Operations



25



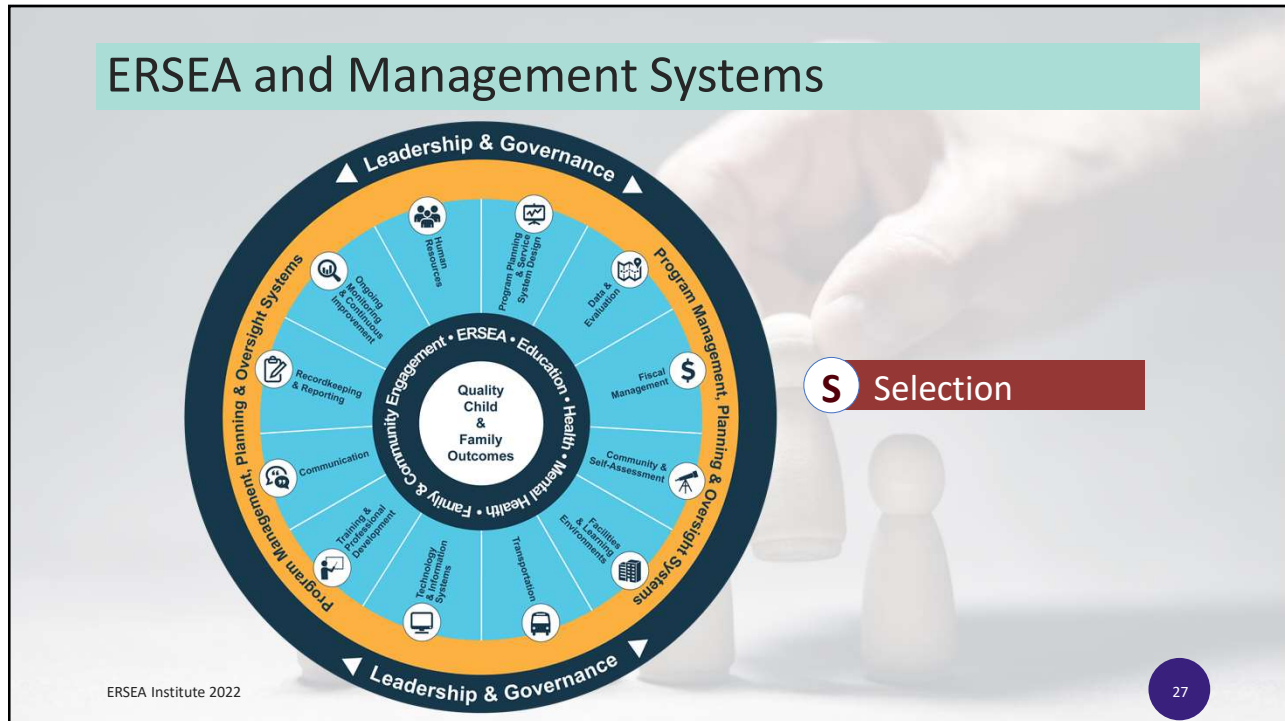
26



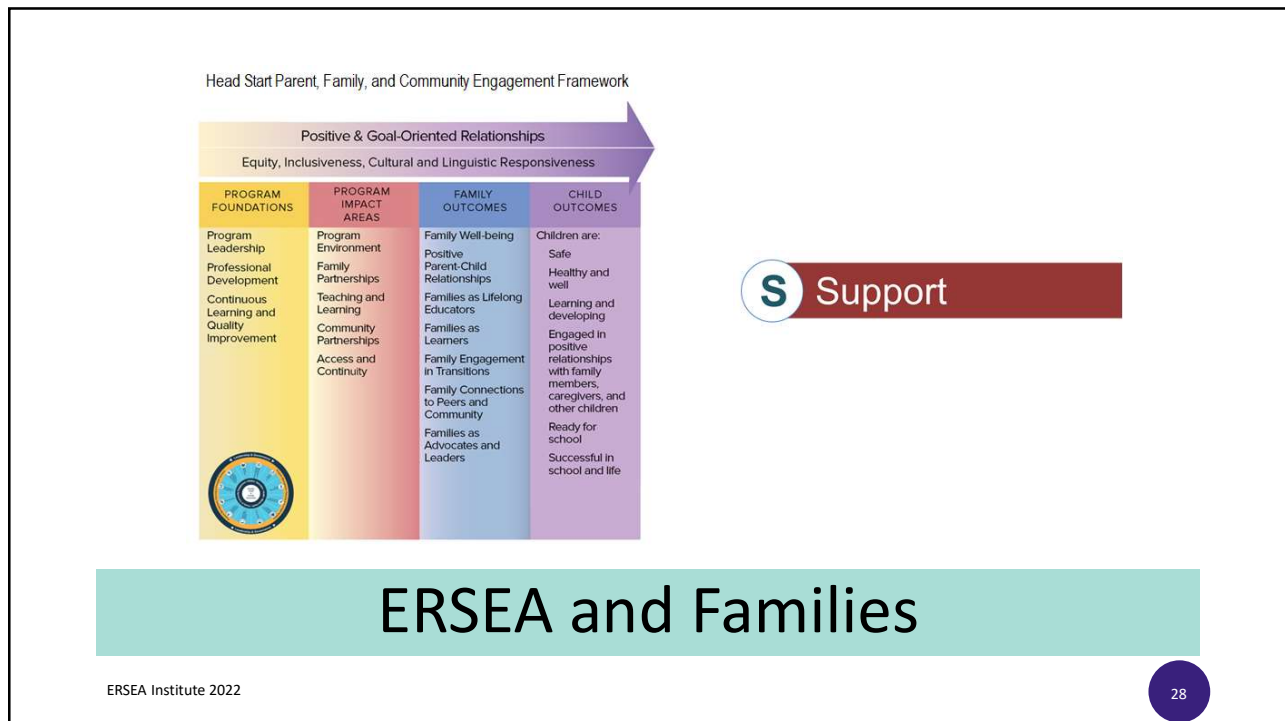
National Center on
Parent, Family, and Community Engagement



National Center on
Program Management and Fiscal Operations



27



28



National Center on
Parent, Family, and Community Engagement



National Center on
Program Management and Fiscal Operations

ERSEA and Management Systems

E Enrollment

ERSEA Institute 2022

29

29

Head Start Parent, Family, and Community Engagement Framework

Positive & Goal-Oriented Relationships Equity, Inclusiveness, Cultural and Linguistic Responsiveness			
PROGRAM FOUNDATIONS	PROGRAM IMPACT AREAS	FAMILY OUTCOMES	CHILD OUTCOMES
Program Leadership Professional Development Continuous Learning and Quality Improvement	Program Environment Family Partnerships Teaching and Learning Community Partnerships Access and Continuity	Family Well-being Positive Parent-Child Relationships Families as Lifelong Educators Families as Learners Family Engagement in Transitions Family Connections to Peers and Community Families as Advocates and Leaders	Children are: Safe Healthy and well Learning and developing Engaged in positive relationships with family members, caregivers, and other children Ready for school Successful in school and life

E Engage

ERSEA and Families

ERSEA Institute 2022

30

30



National Center on
Parent, Family, and Community Engagement



National Center on
Program Management and Fiscal Operations

ERSEA and Management Systems

A Attendance

ERSEA Institute 2022

31

31

Head Start Parent, Family, and Community Engagement Framework

Positive & Goal-Oriented Relationships			
Equity, Inclusiveness, Cultural and Linguistic Responsiveness			
PROGRAM FOUNDATIONS	PROGRAM IMPACT AREAS	FAMILY OUTCOMES	CHILD OUTCOMES
Program Leadership Professional Development Continuous Learning and Quality Improvement	Program Environment Family Partnerships Teaching and Learning Community Partnerships Access and Continuity	Family Well-being Positive Parent-Child Relationships Families as Lifelong Educators Families as Learners Family Engagement in Transitions Family Connections to Peers and Community Families as Advocates and Leaders	Children are: Safe Healthy and well Learning and developing Engaged in positive relationships with family members, caregivers, and other children Ready for school Successful in school and life

A Action

ERSEA and Families

ERSEA Institute 2022

32

32



National Center on
Parent, Family, and Community Engagement



National Center on
Program Management and Fiscal Operations

Summary


- We have the tools we need to move forward together.
- We all benefit when we build from our systems and services with families at the forefront.
- We have faced obstacles with kindness, compassion, perseverance, and each other from the beginning.
- Together, we will keep this tradition and our legacy alive.




ERSEA Institute 2022

33

33



National Center on
Parent, Family, and Community Engagement



National Center on
Program Management and Fiscal Operations

This presentation was supported by the Administration for Children and Families (ACF) of the United States (U.S.) Department of Health and Human Services (HHS) as part of a financial assistance award totaling \$5,900,000 with 100% funded by ACF. The contents are those of the author(s) and do not necessarily represent the official views of, nor an endorsement, by ACF/HHS, or the U.S. Government.

For more information about this webinar, please contact us:

PFCEwebinars@ecetta.info
1-866-763-6481

PMFO@ecetta.info
1-888-874-5469

34



National Center on
Parent, Family, and Community Engagement



National Center on
Program Management and Fiscal Operations