

Office of Head Start National Center
National Center on
Early Childhood Development, Teaching, and Learning

Eligibility: Engaging Families of Children with Disabilities or Suspected Delays

Plenary | April 7, 2022

Resilience Relationships
Roots

Office of Head Start National Center
National Center on
Parent, Family, and Community Engagement

ERSEA INSTITUTE 2022

1

Presenters

Jennifer Fung

Adriana Bernal

Office of Head Start National Center
National Center on
Early Childhood Development, Teaching, and Learning

ERSEA Institute 2022

2

2

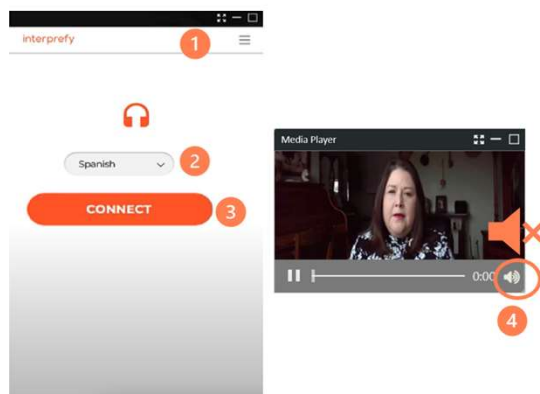
Office of Head Start National Center
National Center on
Parent, Family, and Community Engagement

ERSEA INSTITUTE 2022

Office of Head Start National Center
National Center on
Early Childhood Development, Teaching, and Learning

Interprefy Widget

- Open Interprefy widget. Click on the embedded Interprefy widget 1.
- Select language. Select your preferred language 2 and click connect 3.
- Mute webcast. Mute the audio output on the video player 4.
- Listen to the audio content with interpretation in real-time.



ERSEA Institute 2022

3

3

Learning Objectives

Understand

Understand common experiences of families of children with disabilities and suspected delays

Explore

Explore strategies to support families and build partnerships during the ERSEA process

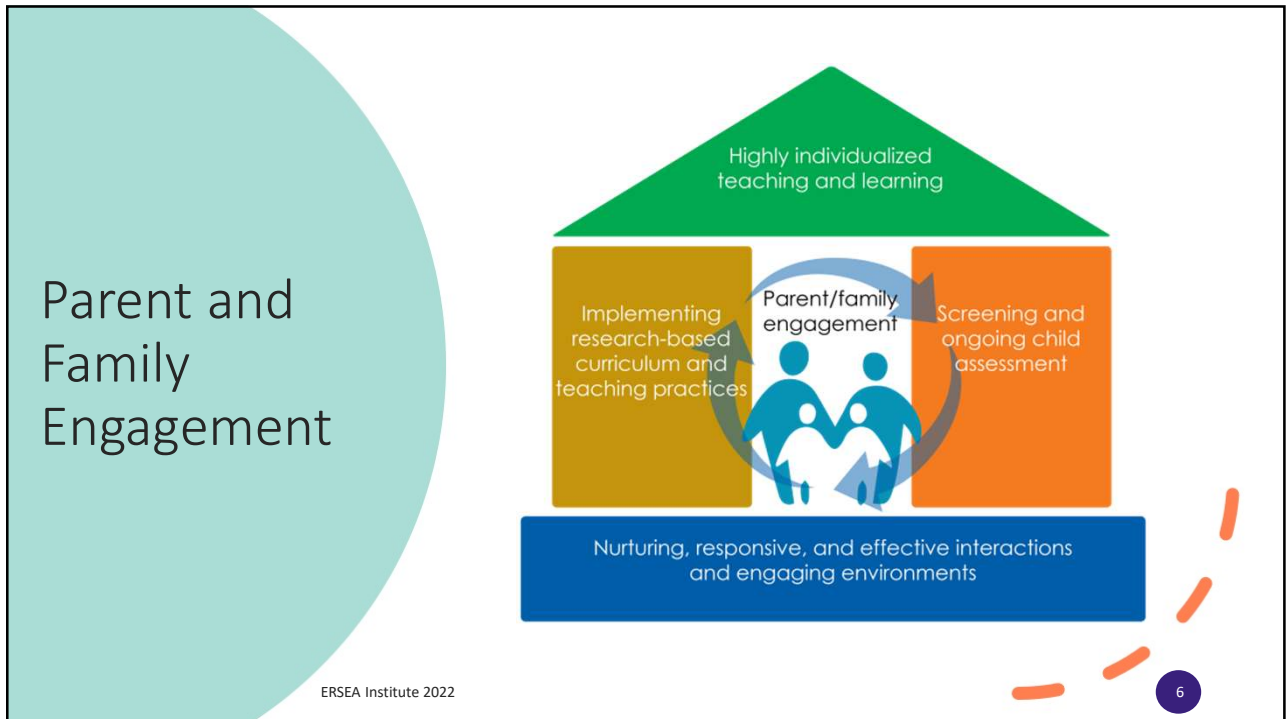
ERSEA Institute 2022

4

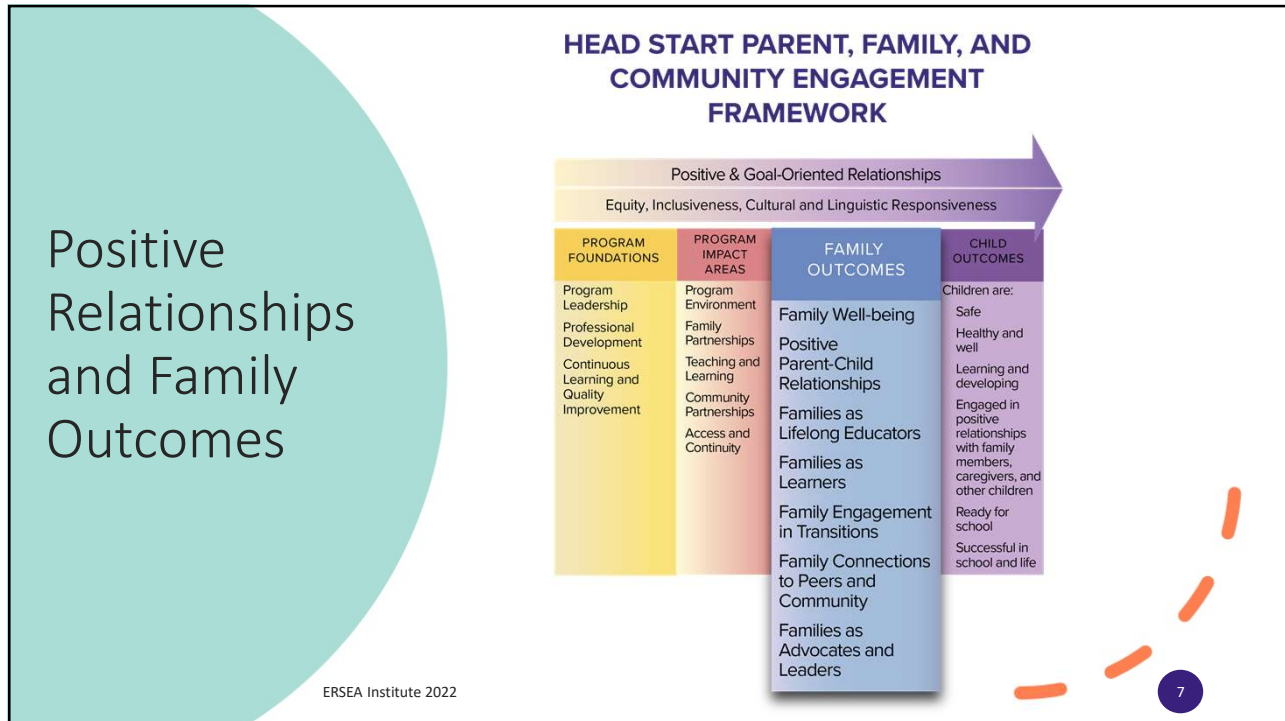
4



5



6



7

Families of Children with Disabilities or Suspected Delays: What Do We Know?

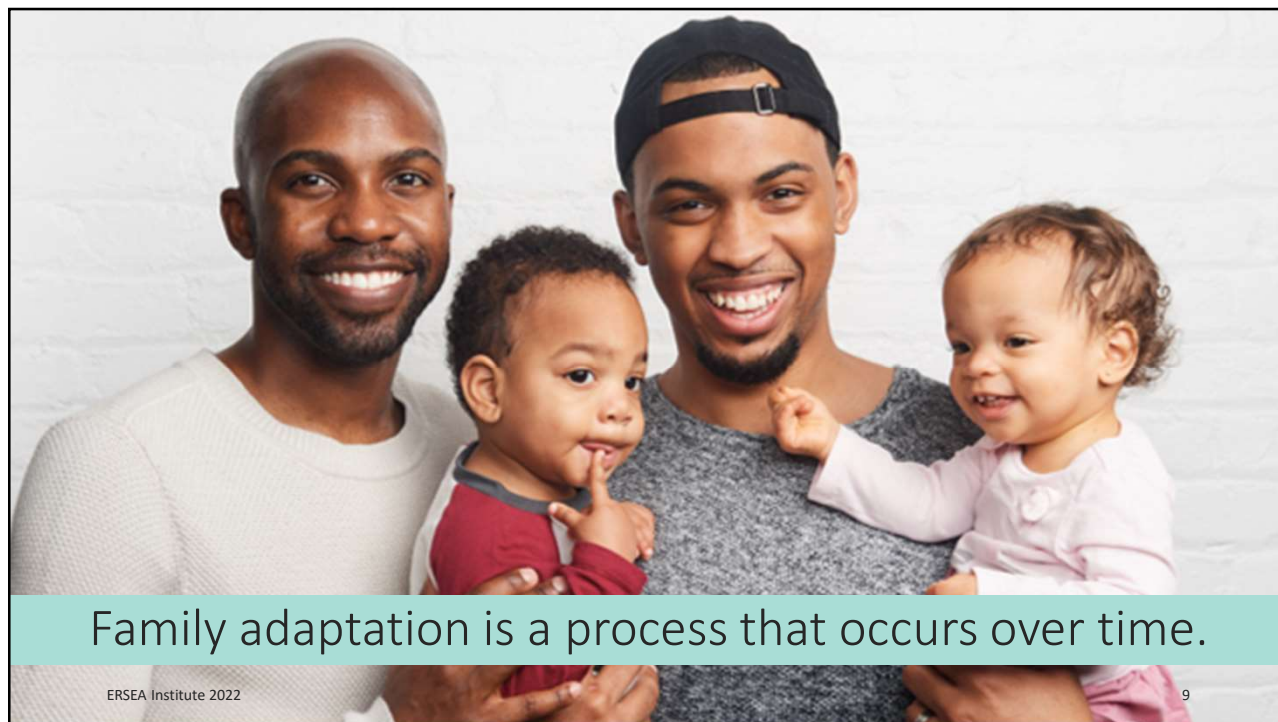
Family outcomes are impacted by:

- Family characteristics
- Experiences
- Emotional reactions
- Support needs



8

8



Family adaptation is a process that occurs over time.

ERSEA Institute 2022

9

9

Family Adaptation: Emotional Reactions



ERSEA Institute 2022

- Relief
- Guilt or anger
- Grief
- Lost time

10

10

Differential Response and Adaptation

Mediating Factors

- Financial strain
- Childcare
- Support services
- Isolation
- Social support
- Child characteristics



ERSEA Institute 2022

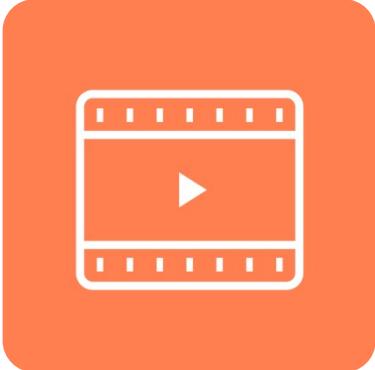
11

11



Family Partnership in Action: Family Voices

12

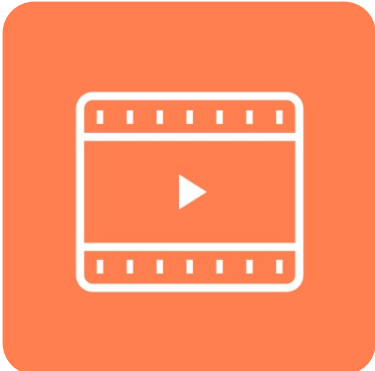


Family Voice:
Ms. Melqui Lopez

ERSEA Institute 2022

13

13



Family Voice:
Ms. Wendy Lopez

ERSEA Institute 2022

14

14

Reflection

- What questions or concerns did these families express?
- What other questions may arise for families during the ERSEA process?

ERSEA Institute 2022

15

15

Partnership Strategies

16

Family Support Priorities

- Accurate, accessible, culturally relevant information
- Emotional and social support
- Resources
- Access to services
- Advocacy



ERSEA Institute 2022

17

17


Effective Family Engagement

- Relationship-based
- Ongoing
- Responsive to strengths and needs of families
- Program-wide
- Collaborative
- Supportive of children's growth, development, and learning
- Culturally and linguistically appropriate

ERSEA Institute 2022

18

18



"When I first started the job, it took me a while to gain the trust of leaders in the community. But over time, they were willing to help me locate families they knew who had young children with suspected disabilities. The families were worried about being stigmatized."

– Disability services coordinator

ERSEA Institute 2022

19

19

Engaging Partners

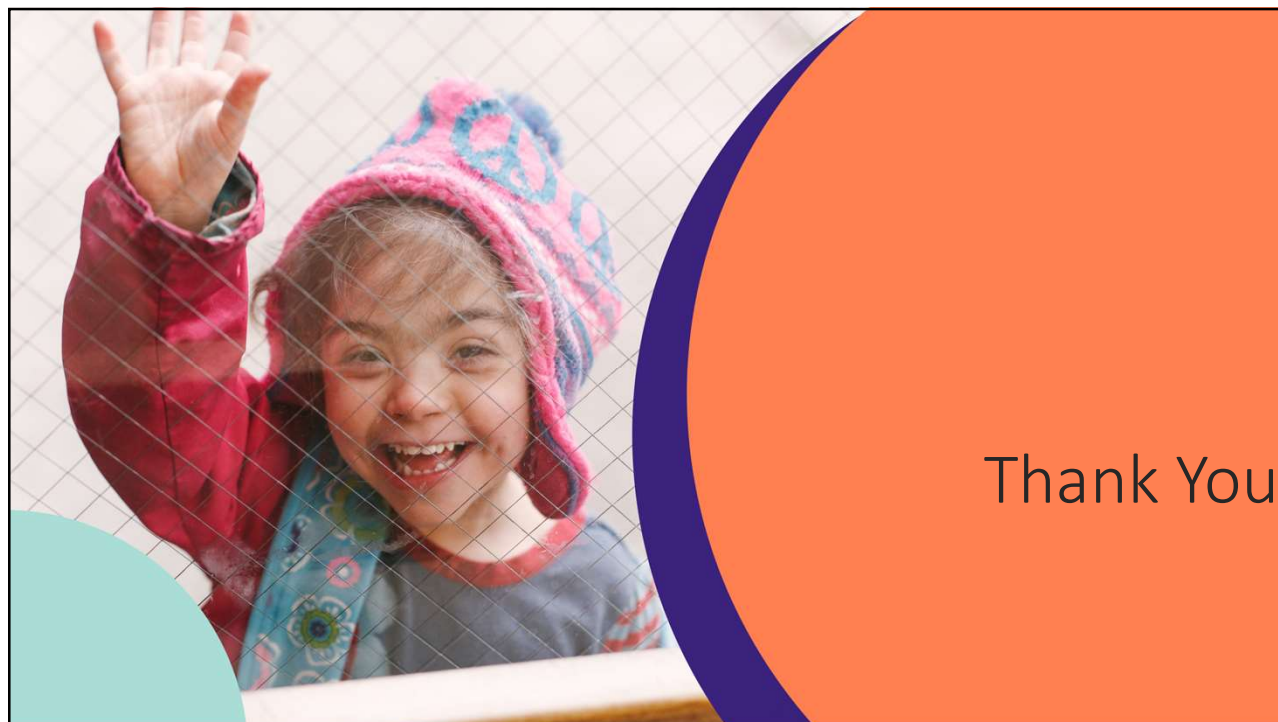
- Get creative
- Find existing groups
- Share about Head Start
- Allow time



ERSEA Institute 2022

20


20



21

For more information about this webinar, please contact us at:

ECDTL@ecetta.info
or
844-261-3752



National Center on
Early Childhood Development, Teaching, and Learning

22