



 NATIONAL CENTER ON
Parent, Family and Community Engagement

Community Partnerships for Family Engagement in the Transition to Kindergarten

April 14, 2020

Community Engagement Webinar Series 

Navigating Adobe

- General Chat
- Interactive Functions
- Download and Web Link Pods
- Recording for ECLKC



National Center on Parent, Family, and Community Engagement

Welcome and Introductions



National Center on Parent, Family, and Community Engagement

NCPFCE Facilitators



Brandi Black Thacker



Dr. Guylaine L. Richard



Leslie Maxfield

National Center on Parent, Family, and Community Engagement

Featured Presenter and Federal Partner



Rilee Larsen,
National Center on Early Childhood
Development Teaching and Learning



Kiersten Beigel,
Comprehensive Services & TTA Division,
Office of Head Start

National Center on Parent, Family, and Community Engagement

Community Engagement Webinar Series

1. Strengthening Family Well-Being Through Engaged Community Partnerships. March 17, 2020.
2. **Community Partnerships for Family Engagement in the Transition to Kindergarten. April 14, 2020.**
3. Head Start Community Partnerships with Child Welfare. June 2, 2020.

Webinar Time: 3:00 – 4:30 p.m. ET

Join the Chat After the Webinar! 4:30 – 4:45 p.m. ET



National Center on Parent, Family, and Community Engagement

Learning Objectives

- Demonstrate how the Head Start Parent, Family, and Community Engagement Framework can support early childhood transitions.
- Discuss strategies for maintaining mutually respectful, strengths-based relationships between Head Start programs and local elementary schools.
- Describe exemplary practices for providing transition services within Head Start programs.
- Illustrate examples of “successful” Head Start to Kindergarten Partnerships.
- Identify resources to prepare the entire family for the transition to kindergarten.

National Center on Parent, Family, and Community Engagement

Key Messages

- Creating a safe and trusting relationship with families and community partners increases the likelihood that transitions will be successful.
- Transitions can be hard, but we actually know a lot about how to facilitate them effectively.
- When partners work well together, it’s a win-win for Head Start/Early Head Start, receiving schools, and for children and their families.



National Center on Parent, Family, and Community Engagement

OHS Related Updates

- CARES Act Funding (Summer programming)
- HS/Community School Partnerships



National Center on Parent, Family, and Community Engagement

Policy Connections

- **Every Student Succeeds Act (ESSA) – Section 1119: Coordination Requirement**
Requires educational programs to systematically coordinate with Head Start or other programs serving preschool age children...
- **Head Start Act – Section 642A**
Requires that Head Start agencies coordinate transition practices and other services with any Local Education Agencies (LEAs)...
- **Head Start Program Performance Standards - §1302.71(c): Community collaborations or transition**
Ensures that programs collaborate with community agencies and kindergarten teachers to support family engagement and successful transition practices...

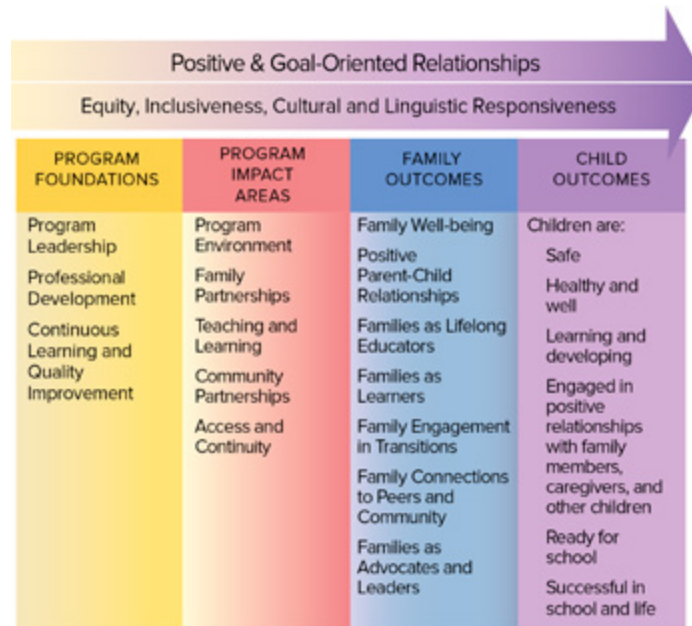
National Center on Parent, Family, and Community Engagement

Transition Is a Process

*Change is external,
Transition is internal.*
-William Bridges



National Center on Parent, Family, and Community Engagement



National Center on Parent, Family, and Community Engagement

Defining “Community Engagement”

- Community engagement refers to the mutually respectful, strengths-based interactions of Head Start and Early Head Start staff and families with community members and agencies at all levels.
- These partnerships support parents’ roles as valued community members and their progress toward their goals for themselves and their children.



National Center on Parent, Family, and Community Engagement

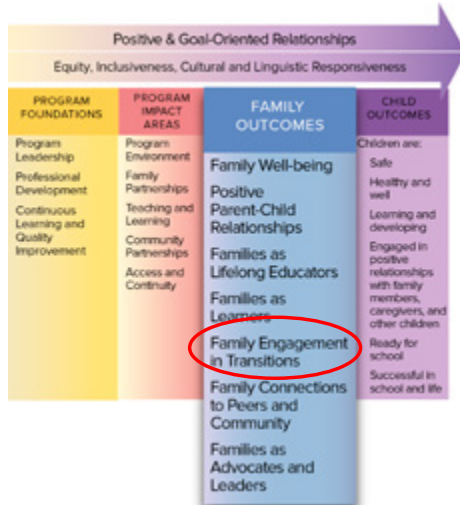
Three Priorities for Community Engagement

Engaged community partnerships benefit children, families, programs and staff, other agencies, and communities. Partners are more likely to meet their goals by working together. Head Start and Early Head Start programs can engage with community partners to focus on three priorities and learn how to best support:

1. Individual Families in Head Start and Early Head Start
2. Families in Head Start and Early Head Start
3. Families in the Community

National Center on Parent, Family, and Community Engagement

Family Engagement in Transitions



Parents and families encourage and advocate for their child’s learning and development as they transition to new learning environments within and between, Early Head Start, Head Start, early childhood services, early elementary grades, and beyond.

National Center on Parent, Family, and Community Engagement

Research

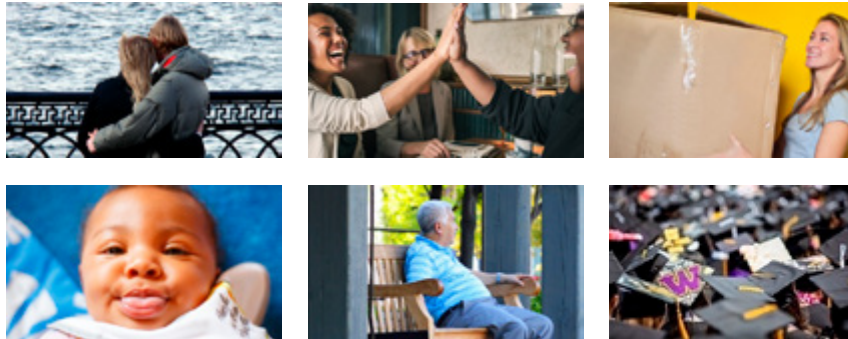


Effective transitions that make a difference are:

- Initiated early (prior to kindergarten)
- Tailored to the cultural, linguistic, and learning needs of individual children and families
- Include activities that teachers, families, and community members can use to create supports and foster familiarity across early childhood settings and kindergarten

National Center on Parent, Family, and Community Engagement

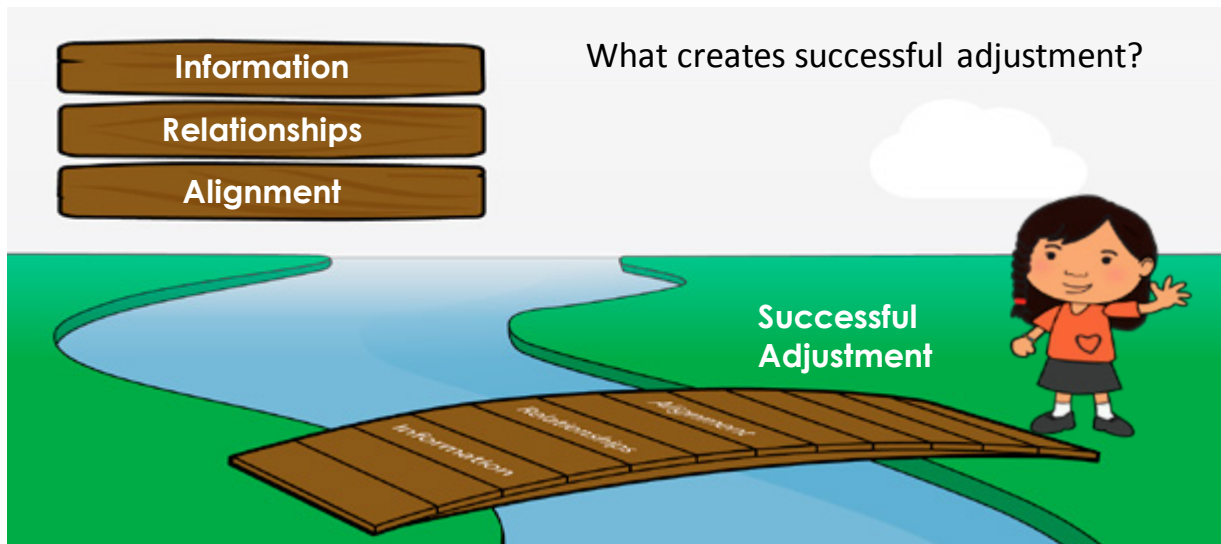
Transitions Across the Lifespan



Children need our help to manage change.

National Center on Parent, Family, and Community Engagement

Three Key Practices



National Center on Parent, Family, and Community Engagement

A Linear View of Transitions

Inadequate View



National Center on Parent, Family, and Community Engagement

A Connected View of Transitions



The changing dynamics of these relationships during transitions influence child outcomes.

National Center on Parent, Family, and Community Engagement

The Four Points of Connection



National Center on Parent, Family, and Community Engagement



National Center on Parent, Family, and Community Engagement

Family-School Connection



National Center on Parent, Family, and Community Engagement

Four Ways Programs and Schools Encourage Family Engagement: Create Continuity in the Transition to Kindergarten



National Center on Parent, Family, and Community Engagement

- Create family-friendly and welcoming environments.
- Promote home/school connections to foster parent engagement in learning and classroom experiences.
- Engage parents as Leaders.
- Support family well-being through effective delivery of comprehensive services.

Create Family – Friendly and Welcoming Environments

Creating Continuity in the Transition to Kindergarten



National Center on Parent, Family, and Community Engagement

Promote Home/School Connections to Foster Parent Engagement in Learning and Classroom Experiences

Creating Continuity in the Transition to Kindergarten



National Center on Parent, Family, and Community Engagement

Engage Parents as Leaders

Creating Continuity in the Transition to Kindergarten



National Center on Parent, Family, and Community Engagement

Support Family Well-being Through Effective Delivery of Comprehensive Services

Creating Continuity in the Transition to Kindergarten



National Center on Parent, Family, and Community Engagement

Transition to Kindergarten

Partnering with Families For Head Start Programs and Schools

FAMILY

SCHOOL

National Center on Parent, Family, and Community Engagement

The graphic features a red banner at the top with the text 'Transition to Kindergarten' in a white circle on the left and 'Partnering with Families For Head Start Programs and Schools' in white on the right. Below the banner is a diagram consisting of a green archway with a white outline. At the top of the arch is a circular icon containing three stylized human figures. The word 'FAMILY' is written in white on a green background across the top of the arch. In the center of the arch is a yellow school building with a flag on top. Below the school building, the word 'SCHOOL' is written in red.

COMMUNITY

SCHOOL

National Center on Parent, Family, and Community Engagement

The graphic features a diagram consisting of a green archway with a white outline. At the top of the arch is a circular icon containing four stylized human figures. The word 'COMMUNITY' is written in white on a green background across the top of the arch. In the center of the arch is a yellow school building with a flag on top. Below the school building, the word 'SCHOOL' is written in red.

Community-School Connection



Strengthen relationships with community partners

- Learn about other organizations and their work.
- Review community and program self-assessment data.
- Communicate regularly. Offer training and professional development opportunities for staff. Consider opportunities for shared training with community partners to foster cross-agency relationship-building.
- Evaluate the effectiveness of partnerships.

National Center on Parent, Family, and Community Engagement

What other ways are you strengthening the community-school connection?



National Center on Parent, Family, and Community Engagement

Key Takeaways

Effective transition services include practices that are:

- Centered on children and families
- Individualized to address children's and families' diverse backgrounds, development, strengths, interests and needs
- Dedicated to promoting continuity within and across early education settings
- Focused on creating and maintaining collaboration between families, programs, and early education partners



National Center on Parent, Family, and Community Engagement

Family Engagement and Transition to Kindergarten Resource Collection on ECLKC

Family Engagement and Transition to Kindergarten

The transition to kindergarten can be a time of great excitement and joy for everyone involved. For children, it is an opportunity to learn new things, master new skills, and feel proud that they are going to kindergarten. For families, it can bring a sense of delight as their children reach another milestone. For Head Start staff and receiving schools, it is a great time for collaboration, coordination, and joint planning.

When early childhood education (ECE) programs and schools actively engage families in their child's transition to kindergarten, and when they are responsive to families' efforts to participate in these transitions, families show increased involvement during the kindergarten year (Schulting, Malone, and Dodge, 2005).

Explore this collection of resources and videos to find the latest information about the importance of engaging families and partnering with them in the transition to kindergarten.



Transition to Kindergarten: Partnering with Families and Schools

Explore how to apply strengths-based attitudes and relationship-based practices. Discover how to build a relationship between a Head Start coordinator and an incoming public school special education team leader.



Your Child Is Going to Kindergarten: Making the Move Together

Explore this step-by-step guide with parents to help them support their children and engage in the kindergarten transition process. Find tips organized across a timeline.

National Center on Parent, Family, and Community Engagement

Community Engagement Webinar Series

1. Strengthening Family Well-Being Through Engaged Community Partnerships. March 17, 2020.
2. Community Partnerships for Family Engagement in the Transition to Kindergarten. April 14, 2020.
- 3. Head Start Community Partnerships with Child Welfare. June 2, 2020.**

Webinar Time: 3:00 – 4:30 p.m. ET

Join the Chat After the Webinar! 4:30 – 4:45 p.m. ET



National Center on Parent, Family, and Community Engagement

MyPeers Communities

✓ PFCE Deepening Practice Communities

- Already a MyPeers member? Find the **PFCE Deepening Practice** community in MyPeers under “All Communities” and select the blue “Join” button.
- Not a member of MyPeers? Sign up!
 - ✓ Visit the MyPeers page on the Early Childhood Learning Knowledge Center (ECLKC).
 - ✓ Scroll to the bottom and select “Create an Account.”
 - ✓ Fill out the form and within a few days you will receive an email from MangoApps with your login information.

National Center on Parent, Family, and Community Engagement

Want to Take Your Family Engagement Practice to the Next Level?

Sign Up for Text4FamilyServices Today!

- This FREE text messaging service was designed for family services providers.
 - It is also available in Spanish (español).
- Just text **“PFCE”** to **22660** to sign up!



National Center on Parent, Family, and Community Engagement

Reflections and Questions

Stay and chat with us!

The speakers will stay on the line an additional 15 minutes to continue the dialogue.



National Center on Parent, Family, and Community Engagement

Evaluation Link and Wrap-up



National Center on Parent, Family, and Community Engagement

Until Next Time...
Thank You!



National Center on Parent, Family, and Community Engagement



PFCE@eclkc.info or call (toll-free) 1-866-763-6481
<http://eclkc.ohs.acf.hhs.gov/hslc/tta-system/family>