


NATIONAL CENTER ON
Parent, Family and Community Engagement

Establishing and Sustaining Community Partnerships for Outreach and Continuity

January 23, 2020



Navigating Adobe

- General Chat
- Interactive Functions
- Download and Web Link Pods
- Recording for ECLKC



National Center on Parent, Family, and Community Engagement

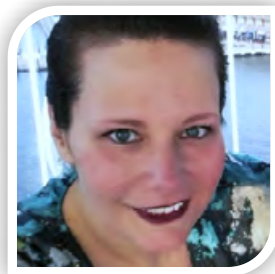
Welcome and Introductions



National Center on Parent, Family, and Community Engagement



Welcome and Introductions



Brandi Black Thacker



Dr. Jennifer Olson

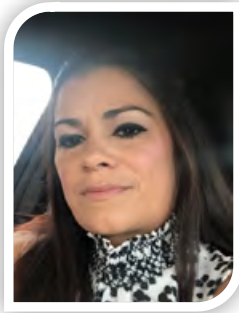


NATIONAL CENTER ON
Parent, Family and Community Engagement

National Center on Parent, Family, and Community Engagement



Welcome and Introductions



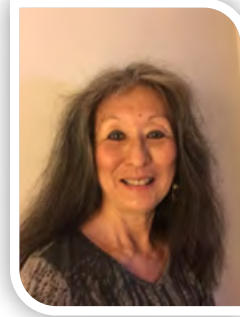
Larae Balag

Director of
Early Childhood Education,
Maui Family Support Services



Ben Naki

Vice President of Early
Childhood
Education Programs, Parents
and Children Together



Chris Jackson

Head Start State
Collaboration Director,
Executive Office on Early
Learning

National Center on Parent, Family, and Community Engagement



Federal Partners



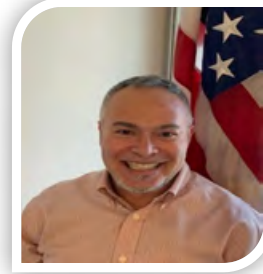
Kiersten Beigel

Comprehensive Services &
TTA Division,
Office of Head Start



Rachel Gannon

Region 9
Office of Head Start



Bernard Lagud

Region 9
Office of Head Start

National Center on Parent, Family, and Community Engagement



Supporting Families Experiencing Homelessness in Head Start and Early Head Start Three-Part Web Series

1. Prioritizing Families Experiencing Homelessness for Enrollment: Performance Standards and Related Strategies, Oct. 1, 2019
2. Conversations with Families about Living Experiences and Housing Goals: Creating Opportunities for Professional Development in your Program, Nov. 14, 2019
3. Establishing and Sustaining Community Partnerships for Outreach and Continuity, Jan. 23, 2020

Webinar Time: 3:00-4:30 p.m. ET

Join the Chat After the Webinar! 4:30-4:45 p.m. ET



National Center on Parent, Family, and Community Engagement

Learning Objectives

- Increasing knowledge of outreach efforts to identify and reach out to families experiencing homelessness
- Recognize role of local- and state-level partners for enhancing identification, outreach, and provision of services through community partnerships
- Exploring exemplary practices for coordinating outreach and working with state and community providers serving families experiencing homelessness



National Center on Parent, Family, and Community Engagement

Language Matters

- Homelessness does not define the person or child
- People first language acknowledges the individual before the situation (families experiencing homelessness)
- Homelessness is a situation the family is experiencing, not a status
- Our language should honor each family's culture, language, and experience.



National Center on Parent, Family, and Community Engagement



What We Know

- The number of young children experiencing homelessness has reached a historic high.
- More than a million children under the age of 6 were identified as experiencing homelessness.
- Children who are experiencing homelessness have more developmental, health, emotional, behavioral, and learning challenges than their peers.
- Homelessness can create barriers to participating in early childhood and school-age child care programs. Such programs can help lessen the negative effects of homeless.



National Center on Parent, Family, and Community Engagement



Region 9 Data

Families experiencing homelessness	2017-18	2018-19
National	50,789 / 4.82%	54,395 / 5.19%
Region 9	5,325 / 3.81%	6,207 / 4.37%

+3,606

+882

National Center on Parent, Family, and Community Engagement



Hawaii Data

	#/%	Funded
HI 2019	221 / 6.16%	2,959
HI 2018	222 / 6.15%	2,974
HI 2017	219 / 5.95%	3,016
HI 2016	237 / 6.02%	3,217
HI 2015	126 / 3.24%	3,152

National Center on Parent, Family, and Community Engagement



Hawaii Landscape

- Second highest rate of homelessness per capita in the nation (NY now #1)
- High cost of living
 - 48% of Hawaii families with children have incomes at the ALICE survival budget threshold or below
 - Lack of affordable housing: rental cost for 1 bedroom - \$1,600; 2 bedroom - \$2,100; median price for single family home - \$789K
 - High construction costs: building materials imported; shortage of skilled laborers



National Center on Parent, Family, and Community Engagement



Hawaii Landscape



- Natural disasters: hurricanes/tropical storms, flooding, volcanic eruptions
- 2018 Aloha United Way (AUW)
 - 2-1-1 requests: food (#1); housing & rental assistance (#2)
- 2017 Hawaii Homeless Service Utilization Report:
 - 1,622 children (birth to five) served through shelters and/or outreach services statewide (not including those doubled-up)
- USDOE Early Childhood Homelessness State Profiles (2019):
 - 1 in 38 children in Hawaii under the age of 6 are considered homeless

National Center on Parent, Family, and Community Engagement



Numbers of Children (Birth to Five) served in 2018-2019:

Program	Number of Children
Head Start/Early Head Start programs	221
Partners in Development/Ka Pa'alana Homeless Education Program	572
Department of Health Early Intervention programs	42
Department of Health MIECHV programs	44
Department of Education special education pre-K programs	56

National Center on Parent, Family, and Community Engagement

What are the challenges for families experiencing homelessness in accessing quality programs?

- May not disclose their living situation or see themselves as homeless.
- May not know what services they qualify for or where services are located
- Can be invisible in communities, which means typical recruitment and outreach efforts may not reach them.



National Center on Parent, Family, and Community Engagement

What are the challenges for families experiencing homelessness in accessing quality programs?



- May be unable to take advantage of typical parent information and enrollment services because they are without resources or a stable address.
- Face barriers to enrolling and participating in early childhood programs and may require accommodations to complete enrollment requirements and continue participation when they move.

National Center on Parent, Family, and Community Engagement



Quality Programs Make a Difference

- Quality early childhood and school-age child care programs offer children and their families services and opportunities to grow and thrive.
- Head Start programs are guided by federal regulations to identify and prioritize children and families experiencing homelessness.
- The goal of these federal regulations is to ensure that more children are enrolled in quality programs. This ensures that children and their families receive the services that support their success.

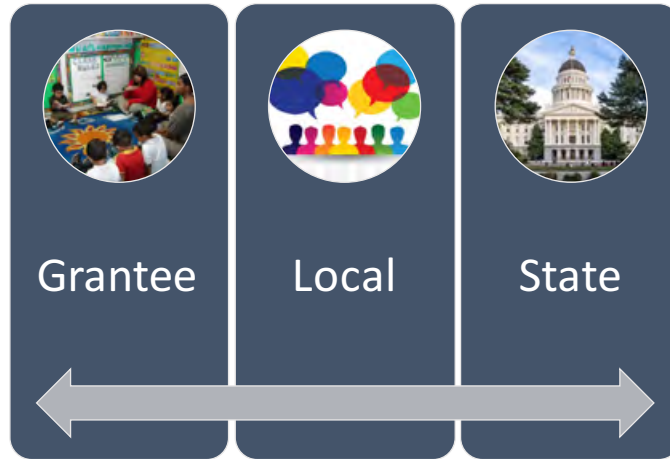


National Center on Parent, Family, and Community Engagement



Outreach is Key to Overcoming Challenges

Outreach
occurs at
many levels.



National Center on Parent, Family, and Community Engagement

Larae Balag



Director of
Early Childhood Education

National Center on Parent, Family, and Community Engagement

Maui Family Support Services Inc., Early Head Start

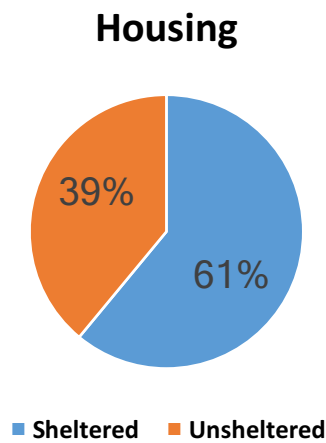
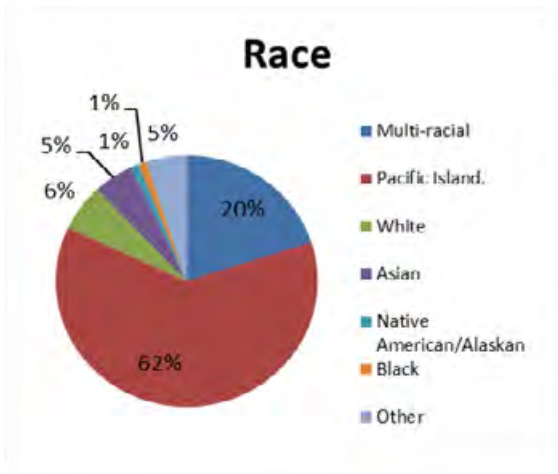
Center Based Services provided on the island of Maui:

- Wailuku-Dark Pink
- Waiale-Dark Pink
- Lahaina- Yellow shade
- Home Based Services provided on the island of Maui and Molokai



National Center on Parent, Family, and Community Engagement

Demographics of Participants



National Center on Parent, Family, and Community Engagement

Homeless Shelter Partnerships

Ka Hale A Ke Ola Homeless Resource Center

- Waiale (Wailuku)
- Lahaina



National Center on Parent, Family, and Community Engagement

Outreach Efforts

- Maui Health Systems-Kaiser Permanente
 - 7 days a week outreach and screening at the only delivery Hospital on Maui
 - “Adopt A Family” during the Holiday season
- Malama Family Recovery Center
 - Only Inpatient Recovery Center on the Island for Women only
- Next Steps for Outreach
 - Maui Police Department



National Center on Parent, Family, and Community Engagement

Sustaining Relationships with our Partners



- Clear Agreements that state each agency's responsibility
- Inviting your Partner throughout the year in a variety of agency events, such as community recruitment fairs etc.
- Check-in meeting and/or conversations
- Keep your partners in the loop about program changes.

National Center on Parent, Family, and Community Engagement



Ben Naki



Vice President of Early
Childhood
Education Programs

National Center on Parent, Family, and Community Engagement



Parents And Children Together

Working together with Hawaii's children, individuals and families to create safe and promising futures.

Serving over 15,000 individuals in the areas of:



**Early
Childhood Education**



**Community
Building**



**Child
Welfare**



**Domestic
Violence**



**Behavioral
Health**



**Poverty
Prevention**

National Center on Parent, Family, and Community Engagement

PACT Early Head Start/Head Start program

- One of the 15 programs offered by PACT
- Funded to serve:
 - 513 HS (center-base)
 - 289 EHS (home-base and center-base)
 - 72 EHS-CCP (center-base)
- \$10+ million-dollar budget (federal, state, private funds)
- 2nd largest HS grantee and largest EHS grantee in HI
- Oahu and Hawaii Island



National Center on Parent, Family, and Community Engagement

The Opportunity @ Kahauiki Village

- Governor's Emergency Homeless Proclamation (October 2015)
- Duane Kurisu, businessman and philanthropist, identified a need
- Leveraged relationships to acquire land (11.3 acres) and resources to build a community (200+ partners)
 - State and County officials
 - Komatsu House Ltd.
 - Contractors
 - Private Individuals and Organizations



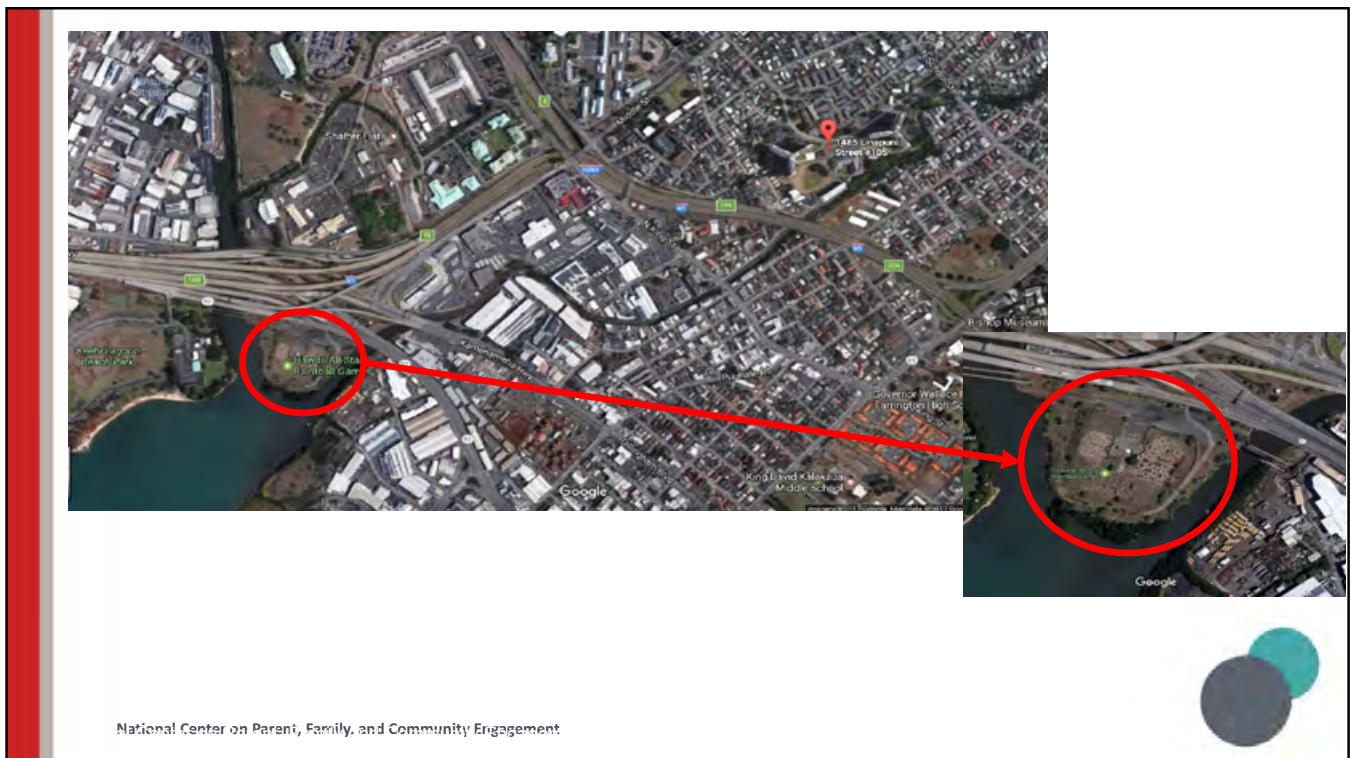
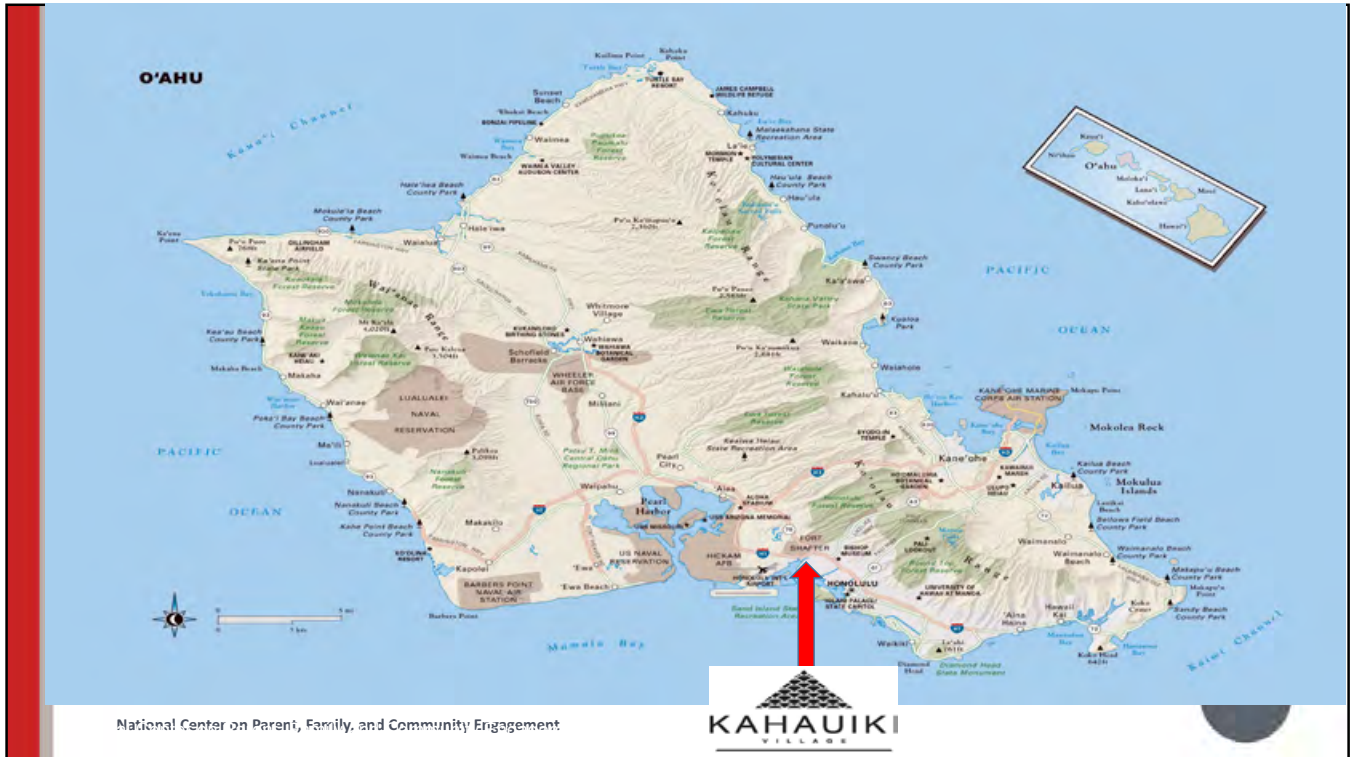
National Center on Parent, Family, and Community Engagement

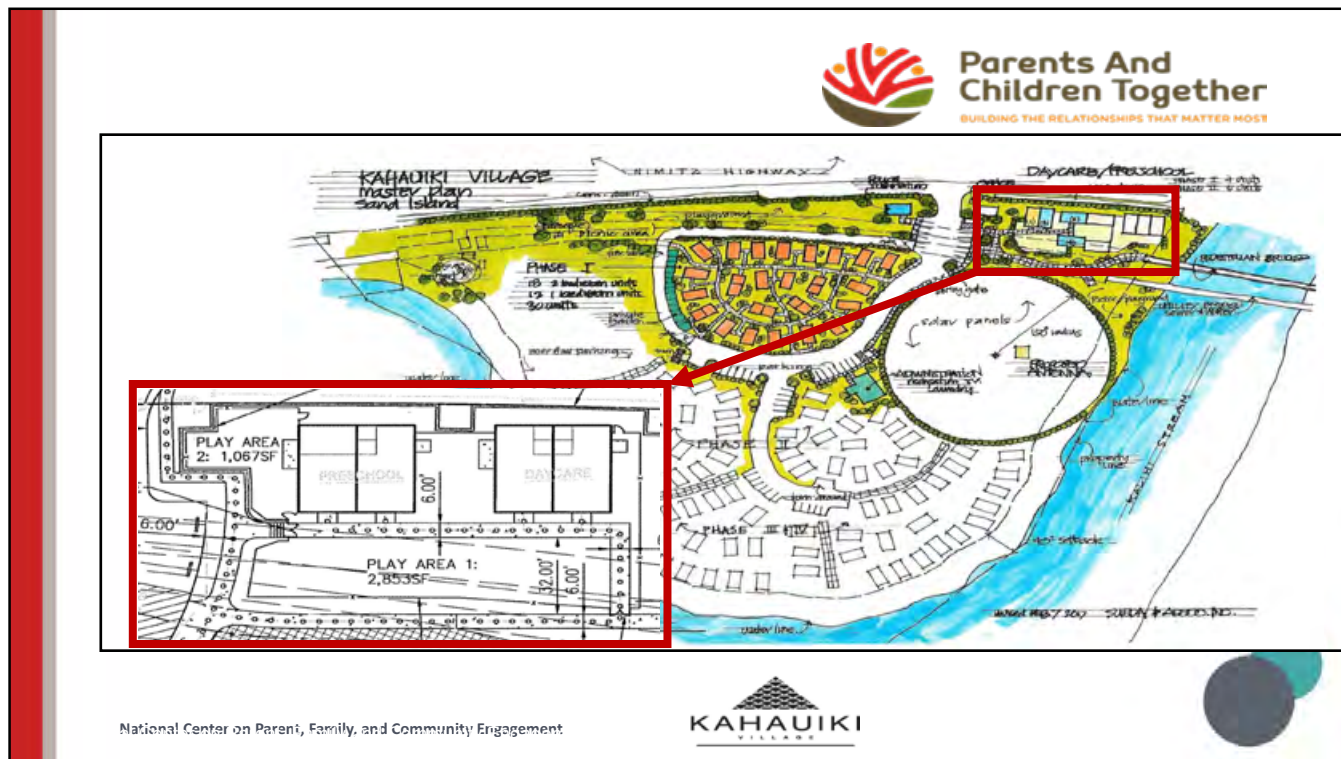
The Opportunity @ Kahauiki Village

The Village Concept

- Provide long term, permanent, affordable rental housing for homeless families
- 144 one- and two-bedroom homes that are prefabricated, steel-framed, module units, energy efficient
- Families were selected through various providers that serve homeless families
- All units come fully furnished and ready for families
- Plantation-style designed community

National Center on Parent, Family, and Community Engagement





The Opportunity @ Kahauiki Village

The Village Concept (continued)

- On-site services
 - Social services
 - Community store
 - Laundromat
 - Post office
 - Extra curricular activities for older school age kids
 - Recreation area (still being built)
 - Transportation to/from school (school age kids)
 - Childcare – Early Head Start and Head Start

National Center on Parent, Family, and Community Engagement



The Partnerships @ Kahauiki

National Center on Parent, Family, and Community Engagement

PACT begins EHS and HS services @ Kahauiki
in August 2018

- 2 EHS classrooms – 16 slots
- 1 HS classroom- 20 slots
- Priority given to Kahauiki residents
- 10-hour days, year round



The Partnerships @ Kahauiki (continued)

Funding

- Head Start
- Child Care Subsidies
- Private
- Parent pay (no more than \$100/month)

Institute for Human Services (on-site provider)

- Non-Profit
- Homeless services; shelters, outreach, etc.
- Manage intakes of incoming Kahauiki families
- Partnered w/PACT on enrolling children into EHS/HS classrooms

National Center on Parent, Family, and Community Engagement



The Partnerships @ Kahauiki (continued)

Other relationships as a result of Kahauiki Village

- Preschools
- High schools
- Community colleges
- Rotary clubs
- Tours by organizations, companies, individuals that want to help families and children



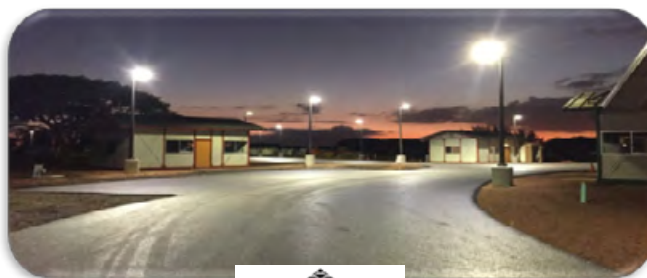
National Center on Parent, Family, and Community Engagement

Kahauiki Village

For More information:

- *Kahauiki Village: We Built It* <https://vimeo.com/279951760>
- *Kahauiki Village Groundbreaking* <https://vimeo.com/236803745>
- *Kahauiki Village Gets 3 Million Dollar Donation and Wins Award* <http://www.honolulumagazine.com/Honolulu-Magazine/September-2018/Kahauiki-Village-Gets-3-Million-Donation-and-Wins-Award/>
- Kahauiki.org

National Center on Parent, Family, and Community Engagement



It takes a village...

Chris Jackson



Head Start State
Collaboration Director

National Center on Parent, Family, and Community Engagement



Outreach at State, Local and Grantee Levels

Hawaii Head Start State Collaboration Office (HHSSCO):

- Established in Hawaii in mid/late 1990's
- Currently positioned in Hawaii's Executive Office on Early Learning (EOEL)
- Helps build and/or strengthen partnerships between Hawaii HS/EHS grantees and state and community stakeholders
- Formalizes strategic partnerships through state-level inter-agency agreements
- Brings Head Start voice to state and local level planning, policy development and advocacy



National Center on Parent, Family, and Community Engagement



Outreach and Coordination of Efforts around Homelessness

- Inter-agency agreement with Hawaii DOE Homeless Concerns Office (HCO)
- December 2018 Statewide Child Homelessness Summit with HCO
- Child Homelessness Action Team (CHAT) meetings for cross-sector conversations and action
- Education Leads Home grant in 2018 to implement CHAT activities

National Center on Parent, Family, and Community Engagement



Outreach and Coordination of Efforts around Homelessness (continued)

- Outreach and partnership-building with Continuum of Care stakeholders (Partners in Care on Oahu; Bridging the Gap on Neighbor Islands)
- Integrating work with other entities doing system-building work (e.g., Early Childhood Action Strategy, EOEL's Early Childhood State Plan and recent Preschool Development Grant B-5)
- Planning focus groups on all islands between HS/EHS and state and community partners (Spring 2020)

National Center on Parent, Family, and Community Engagement



“If you want to go fast, go alone.
If you want to go far, go together.”
(African proverb)



National Center on Parent, Family, and Community Engagement



Supporting Children and Families Experiencing Homelessness: An Interactive Learning Series



National Center on Parent, Family, and Community Engagement



Home at Head Start: What We Are Learning



#HomeAtHeadStart

National Center on Parent, Family, and Community Engagement



Supporting Families Experiencing Homelessness in Head Start and Early Head Start Three-Part Web Series

1. Prioritizing Families Experiencing Homelessness for Enrollment: Performance Standards and Related Strategies, Oct. 1, 2019
2. Conversations with Families about Living Experiences and Housing Goals: Creating Opportunities for Professional Development in your Program, Nov. 14, 2019
3. Establishing and Sustaining Community Partnerships for Outreach and Continuity, Jan. 23, 2020

Webinar Time: 3:00-4:30 p.m. ET

Join the Chat After the Webinar! 4:30-4:45 p.m. ET



National Center on Parent, Family, and Community Engagement

MyPeers Communities

- ✓ ERSEA Managers-Coordiators
- ✓ PFCE Deepening Practice Communities
- Already a MyPeers member? Find the ERSEA Managers-Coordiators or PFCE Deepening Practice communities in MyPeers under "All Communities," and select the blue "Join" button.
- Not a member of MyPeers? Sign up!
 - ✓ Visit the MyPeers page on the Early Childhood Learning Knowledge Center (ECLKC).
 - ✓ Scroll to the bottom and select "Create an Account."
 - ✓ Fill out the form and within a few days you will receive an email from MangoApps with your login information.

National Center on Parent, Family, and Community Engagement



Want to Take Your Family Engagement Practice to the Next Level?



Sign Up for Text4FamilyServices Today!

This FREE text messaging service was designed for family services providers.

It is also available in Spanish (español).

National Center on Parent, Family, and Community Engagement



What You Will Get When You Sign Up



- Two free text messages per month with information, tips, research, and links to helpful resources that will help you strengthen your work with children and families
- Announcements about upcoming events and professional development opportunities
- Access to the latest parent, family, and community engagement (PFCE) resources as soon as they are released

National Center on Parent, Family, and Community Engagement



Signing Up is Easy!



Just text “PFCE” to 22660 to sign up!

Text “STOP” to 22660 to cancel, or
“HELP” for technical assistance.

It’s that easy!

National Center on Parent, Family, and Community Engagement

Have More Questions?

Stay and chat with us!

The speakers will stay on the line an
additional 15 minutes to continue the
dialogue.



National Center on Parent, Family, and Community Engagement



NATIONAL CENTER ON
Parent, Family and Community Engagement

For more information, please contact us:
PCFE@ecetta.info | 1-866-763-6481

