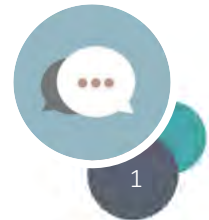
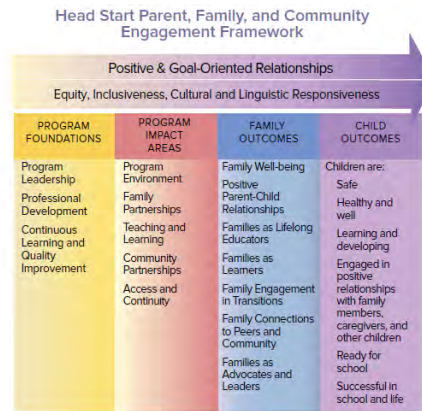




**Let's Chat! Share Your Thoughts in the Chat Box:**

How does the Head Start Parent, Family, and Community Engagement Framework connect to your work and your job responsibilities?



National Center on Parent, Family, and Community Engagement



NATIONAL CENTER ON  
Parent, Family and Community Engagement

# Head Start Parent, Family, and Community Engagement Framework 2<sup>nd</sup> Edition

August 30, 2018

# Logistics

- If possible, connect via hard-wired internet (instead of WiFi)
- Enhance connectivity by closing other programs
- Your phones will be on mute
- To make a comment during the webinar, please use the chat box
- A link for the survey and certificate will be sent after the webinar
- This webinar will be posted on ECLKC

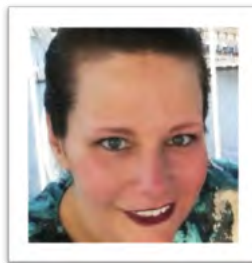
National Center on Parent, Family, and Community Engagement

3

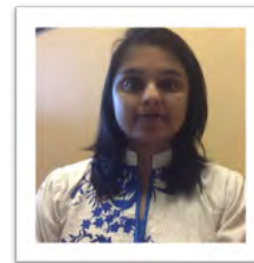
# Welcome and Introductions



Joshua Sparrow,  
Co-Principal Investigator



Brandi Black Thacker, Director  
of T/TA and Collaboration



Jhumur Saeed,  
Resource Development  
Specialist

National Center on Parent, Family, and Community Engagement

4

# Objectives

- Build on previous conversations and knowledge about the HS PFCE Framework
- Discuss similarities and differences in the revised HS PFCE Framework
- Explore cross-cutting strategies to implement the HS PFCE Framework in program settings

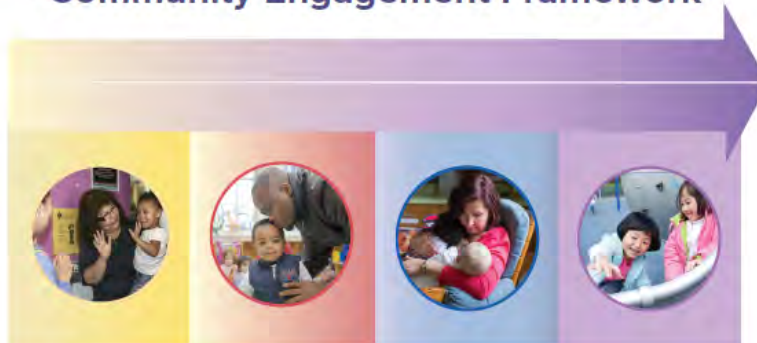


National Center on Parent, Family, and Community Engagement

5

# Why Did We Revise?

## Head Start Parent, Family, and Community Engagement Framework



National Center on Parent, Family, and Community Engagement

6

# Head Start Program Performance Standards

## Family partnerships services, 45 CFR § 1302.52(b)

- A program must implement intake and family assessment procedures to **identify family strengths and needs related to the family engagement outcomes as described in the Head Start Parent, Family, and Community Engagement Framework**, including family well-being, parent-child relationships, families as lifelong educators, families as learners, family engagement in transitions, family connections to peers and the local community, and families as advocates and leaders.

National Center on Parent, Family, and Community Engagement



# Clarifying Definitions

## Family Engagement

An interactive process through which program staff and families, family members, and their children build positive and goal-oriented relationships.

It is a shared responsibility of families and professionals that requires mutual respect for the roles and strengths each has to offer. Family engagement means doing with—not doing to or for—families.

National Center on Parent, Family, and Community Engagement



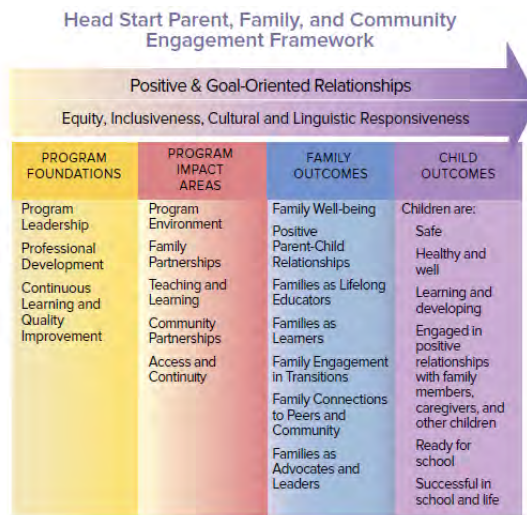
## Clarifying Definitions

<b>Systemic</b>	All staff in Head Start and Early Head Start programs have a role to play in promoting Parent, Family, and Community Engagement.
<b>Integrated</b>	All parts of a program achieve better Parent, Family, and Community Engagement results by working together.
<b>Comprehensive</b>	Program services are designed for holistic staff responses.
<b>Program Elements</b>	Eight program elements work together to promote effective PFCE including three Program Foundations and five Program Impact Areas.

National Center on Parent, Family, and Community Engagement

9

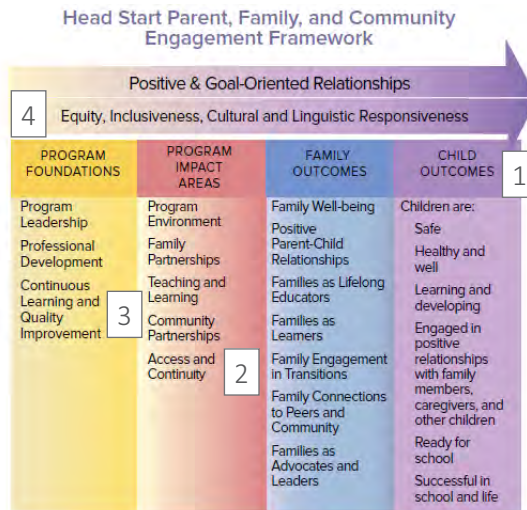
## Head Start PFCE Framework



National Center on Parent, Family, and Community Engagement

10

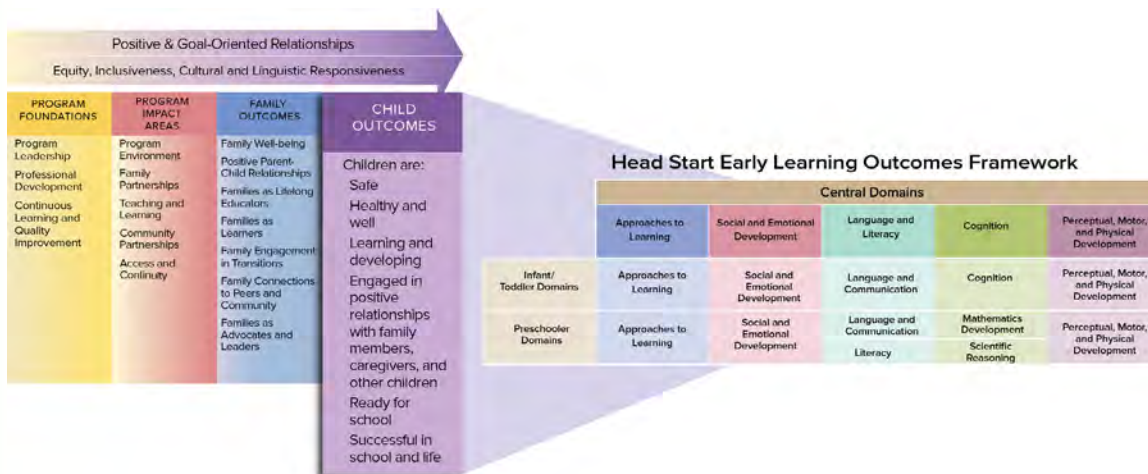
# Head Start PFCE Framework



National Center on Parent, Family, and Community Engagement

11

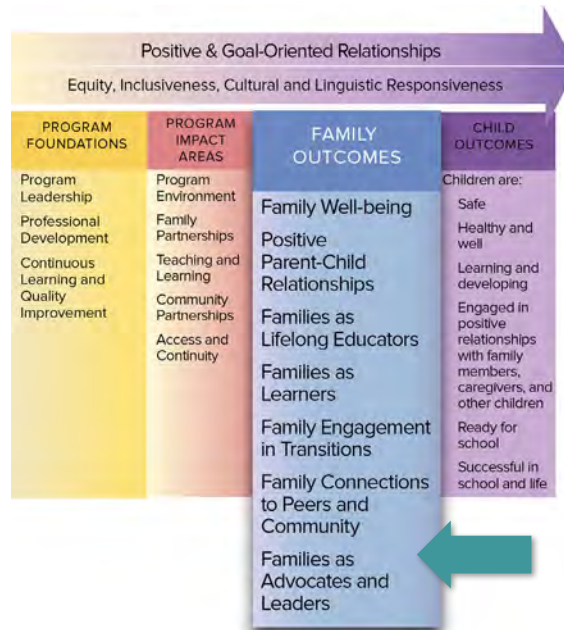
# Child Outcomes



National Center on Parent, Family, and Community Engagement

12

# Family Outcomes



National Center on Parent, Family, and Community Engagement

13

# Program Impact Areas



National Center on Parent, Family, and Community Engagement

14

# Program Foundations



National Center on Parent, Family, and Community Engagement

15

# Positive, Goal-oriented Relationships Advance Family and Child Outcomes



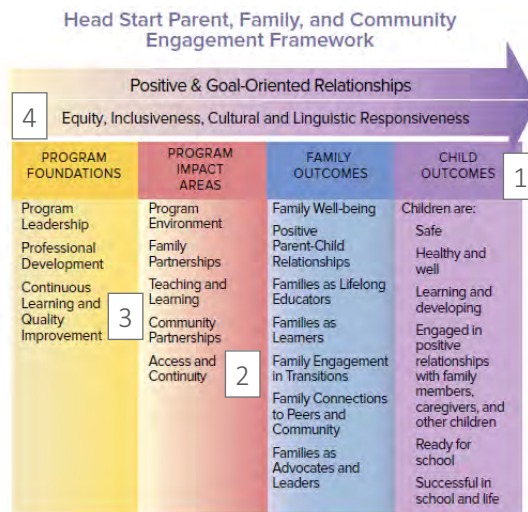
- **Positive, goal-oriented relationships develop over time.**
- **Equity, inclusiveness, cultural and linguistic responsiveness are at the heart of these relationships, which**
  - are fueled by families' passion for their children,
  - are based on mutual respect and trust,
  - affirm and celebrate families' cultures and languages,
- provide opportunities for two-way communications,
- include authentic interactions that are meaningful to those who participate in them, and
- often require an awareness of one's personal biases and how those biases can affect mutual respect and trust.

National Center on Parent, Family, and Community Engagement

16



# Head Start PFCE Framework



National Center on Parent, Family, and Community Engagement

17

## Discussion

### Let's Chat! Share Your Thoughts in the Chat Box:

- How will this new understanding of the HS PFCE Framework affect what you are currently doing in your programs related to PFCE?
- How will this new understanding of the HS PFCE Framework enhance collaboration and PFCE efforts within your program and with partners?



National Center on Parent, Family, and Community Engagement

18



**coming soon**

## Progressing Toward PFCE Outcomes: Strategies



NATIONAL CENTER ON  
Parent, Family and Community Engagement



## Strategies for All Family Outcomes

Program Foundations	Family Well-being	Parent-Child Relationship	Families as Lifelong Educators	Families as Learners	Family Engagement In Transition	Family Connections to Peers and Community	Families as Advocates and Leaders
<b>Program Leadership</b>	Leaders have systems, supports and structures in place to inform family and staff about program goals to support effective long term strategic planning within the five-year project period. Leaders promote collaboration across content areas and multi-disciplinary teams to ensure responsive and coordinated approaches to make progress toward both family and program goals.						
<b>Professional Development</b>	Leaders create and maintain professional development systems that promote positive, goal-oriented relationships, cultural responsiveness, reflective practice, and workforce development with the intention of supporting family, program, and community growth. Program staff, consultants, contractors, and volunteers are required to comply with program confidentiality policies and professional ethical standards.						
<b>Continuous Learning &amp; Quality Improvement</b>	Leaders analyze and use program self-assessment and community assessment data to set strategic long-term goals for the provision of family and community engagement program services. Leaders include families and community partners in assessing and monitoring progress toward each program goal.						

National Center on Parent, Family, and Community Engagement



## Strategies for All Family Outcomes, cont.

Program Impact Areas	Family Well-being	Parent-Child Relationship	Families as Lifelong Educators	Families as Learners	Family Engagement In Transition	Family Connections to Peers and Community	Families as Advocates and Leaders
<b>Program Environment</b>	<p>Program staff reflects on daily practice and experience to enhance self-awareness and to build relationships with families.</p> <p>All program staff welcome, honor, and support all family structures, sizes, and arrangements, and the unique cultural, ethnic, and linguistic backgrounds of families.</p> <p>Leaders and program staff create family-friendly spaces with pictures and materials that affirm and welcome all families.</p>						
<b>Family Partnerships</b>	<p>Families and staff seek opportunities to build strong, mutually respectful relationships, and staff collaborate with families to identify family interests, needs, and aspirations.</p> <p>Program staff use the Family Partnership process as a tool for ongoing relationship-building and as a basis for goal setting, individualized family services, and follow up.</p>						

National Center on Parent, Family, and Community Engagement

21

## Strategies for All Family Outcomes, cont.

<b>Teaching &amp; Learning</b>	<p>Families and program staff consistently participate in positive, goal-oriented relationships to support children's learning and development.</p> <p>Program staff and families partner and share what they know and learn about in their care.</p> <p>Families and staff engage in sharing what they each know and learn about their child, while acknowledging parents' primary role as their child's first teacher.</p>
<b>Community Partnerships</b>	<p>Program staff and families engage community members and organizations as partners to help address the goals, interests, needs, and aspirations of families.</p> <p>Program staff link families with meaningful support networks, peer-to-peer groups, and volunteer opportunities in the community.</p>
<b>Access &amp; Continuity</b>	<p>Leaders engage currently and formerly enrolled families to understand families' perspectives on their experiences of program access, participation, and community support.</p>

National Center on Parent, Family, and Community Engagement

22



# Join the Chat After the Webinar!



National Center on Parent, Family, and Community Engagement

25



NATIONAL CENTER ON  
Parent, Family and Community Engagement

For more information, please contact us:  
[PCFE@ecetta.info](mailto:PCFE@ecetta.info) | 1-866-763-6481



NATIONAL CENTER ON  
Parent, Family and Community Engagement