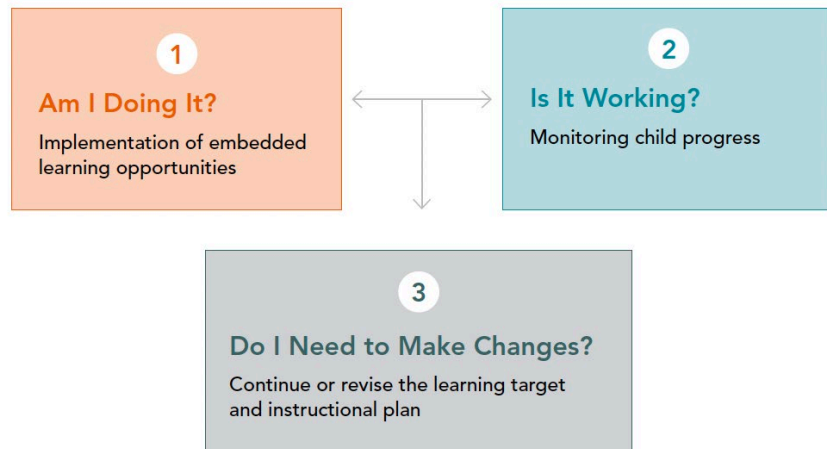




## Evaluating the Use of ELOs

### Making Data-based Decisions

When we evaluate the use of embedded learning opportunities, we focus on three primary questions to provide a framework for data-based decision making.



#### 1. Am I doing it?

It is important to design a strategy for evaluating children to make progress on their learning objectives. A strategy can identify whether you are implementing embedded learning opportunities and whether you are implementing them so that complete instructional sequences occur.

- Collect data on how many complete instructional sequences you provide.

#### 2. Is it working?

You will want to evaluate whether providing embedded learning opportunities is working by tracking the effects of the instruction on the child. To do this, you will need to collect data to monitor child progress.

- Collect data on how many times the child used the correct behavior.

#### 3. Do I need to make changes?

To decide if you need to make changes, look at the data you collected to answer: 1) Am I doing it? and 2) Is it working? See how many complete instructional sequences are being delivered. Next, review child-progress data. Use both sources of information to guide your decision.

- See the materials that accompany this in-service suite for an activity matrix you can use to collect data.