



Head Start Program Performance Standards say:

“A program must support staff to effectively implement curricula and at a minimum monitor curriculum implementation and fidelity, and provide support, feedback, and supervision for continuous improvement of its implementation through the system of training and professional development.”

HSPPS §1302.32(a)(2)

Head Start Curriculum Fidelity

This document is intended to help Head Start administrators and education staff (teachers, home visitors, and child care partners) understand and explore curriculum fidelity.

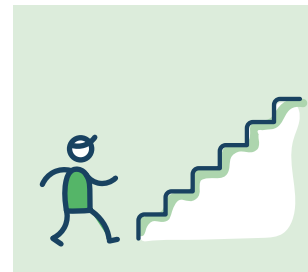
What does it mean?

What is curriculum fidelity?

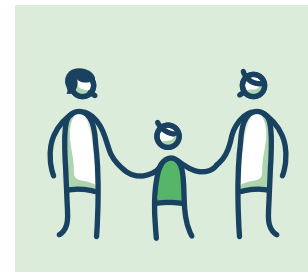
It refers to how closely curriculum content and processes are implemented as designed.

Why is it important?

Curriculum fidelity is critical to ensure that the interactions and activities that make up a curriculum result in positive child outcomes and achieve school readiness goals.



It can help to improve teaching practices to ensure that all children progress as planned.

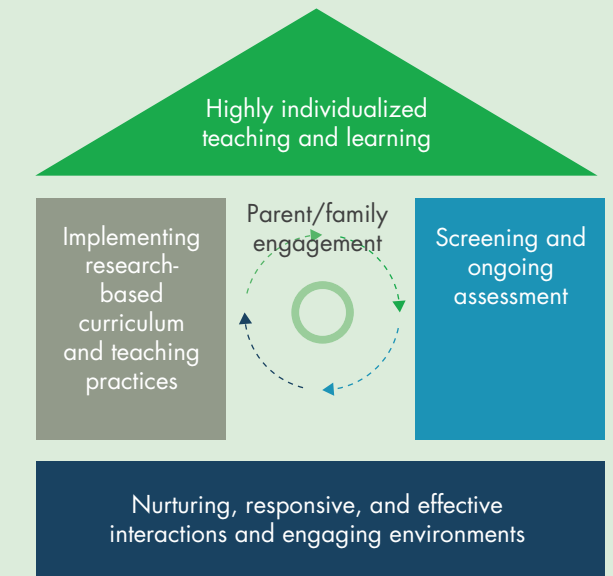


It can help home visitors think through which activities or strategies they will use with families.



It can aid teaching and home visiting teams in problem-solving to strengthen curriculum implementation.

How does it fit in the Framework for Everyday Practice?



Roll over framework for more information.

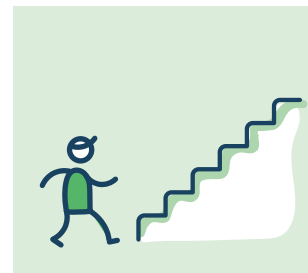
What does it mean?

What is curriculum fidelity?

It refers to how closely curriculum content and processes are

Why is it important?

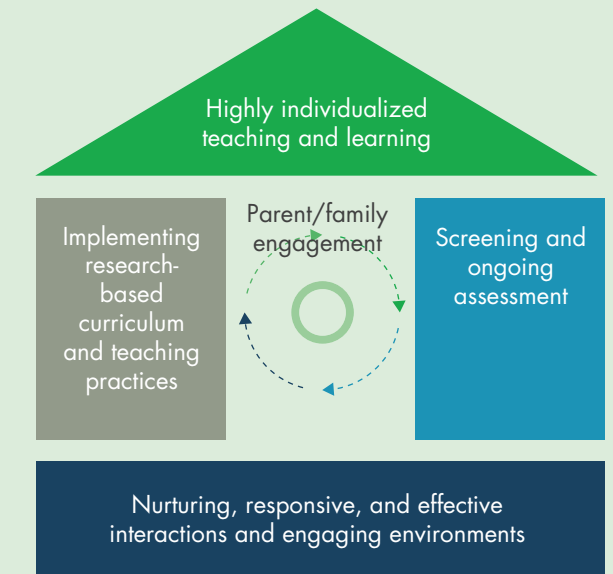
Curriculum fidelity is critical to ensure that the interactions and activities that make up a curriculum result in positive child outcomes and achieve school readiness goals.



It can help to improve teaching practices to ensure that all children progress as planned.

- Providing engaging interactions and environments for children
- Choosing research-based curricula and teaching practices
- Using ongoing assessment of children's skills
- Individualizing teaching and learning

How does it fit in the Framework for Everyday Practice?



Roll over framework for more information.

What does it look like?

What is critical to successfully implementing curriculum with fidelity?

Roll over each spot for more information.



Global Fidelity

Global fidelity provides information on how consistently and regularly education staff implement the key elements of a curriculum over time.

Individual Fidelity

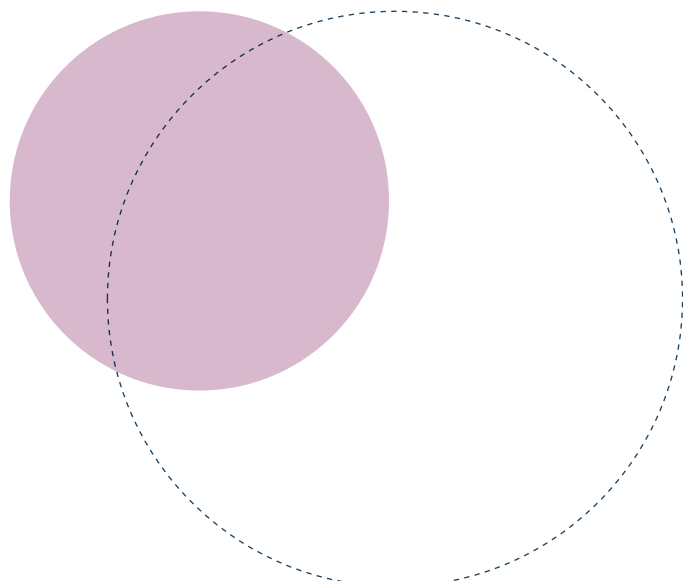
Individual lesson or activity fidelity provides in-the-moment information about the way a curriculum activity is implemented in a learning setting.

Professional Development Support

Initial training or course in curriculum.
Practice-based support with modeling.
Ongoing coaching or mentoring.
Opportunities for self- and peer-reflection.

Ongoing Assessment of Learning

How well is the curriculum working for the children?
Does the program have an assessment system for documenting children's learning over time?
How is the curriculum supporting children's growth and development?



What does it look like?

What is critical to successfully implementing curriculum with fidelity?

Roll over each spot for more information.



What Might You See?

Programs using regular observations to identify things like:

- Education staff consistently follow key principles and teaching practices of the curriculum.
- Education staff are familiar with activities and teaching practices.
- Ongoing coaching and use of performance-based data support improved teaching practices.

Programs using surveys or other opportunities for education staff to give feedback like:

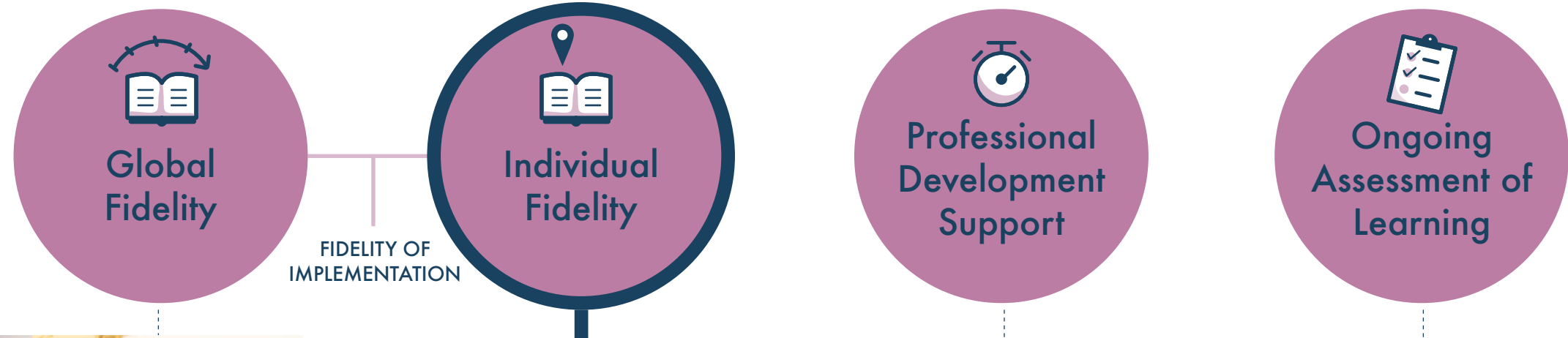
Their challenges or successes in curriculum implementation. How well the curriculum meets the needs of children and families in the program.

Education staff participating in regularly scheduled planning time.
 Education staff organizing materials and the learning environment to support curriculum activities.
 Education staff planning curriculum modifications to support access to learning activities for children with disabilities and children who are dual language learners or in response to the communities they serve.

What does it look like?

What is critical to successfully implementing curriculum with fidelity?

Roll over each spot for more information.



What Might You See?

- Education staff focused on the specific goals identified in the lesson plans.
- Education staff using all the recommended materials.
- Education staff differentiating instruction and learning goals based on formative assessment.
- Children engaged in child-guided experiences based on the curriculum's recommendations for these experiences.

What does it look like?

What is critical to successfully implementing curriculum with fidelity?

Roll over each spot for more information.



What Might You See?

- The program provides education staff with regular, individualized consultation and coaching.
- The program has procedures for providing education staff with feedback on a regular basis.
- Feedback is specific and focused on curriculum implementation.

What does it look like?

What is critical to successfully implementing curriculum with fidelity?

Roll over each spot for more information.



What Might You See?

Education staff regularly documenting children’s knowledge and skills during activities and routines.

Education staff making appropriate adaptations and modifications for children with special needs.

Education staff using appropriate strategies to support language development for children who are dual language learners.

Why is ongoing assessment of child learning important?

It allows education staff to assess whether or not children are learning and make adjustments to activities.

Evidence of benefits to children can support education staff’s belief in the value of a curricular approach and their ability to implement the curriculum well.

What does it mean for programs?

How can programs optimize their ability to implement curriculum with fidelity?

Programs can:

Hire education staff with training and education in early childhood (B-5) curriculum and instruction.

Train all education staff to implement the curriculum as intended, using fidelity tools that may be provided by the publisher.

Why is professional development important?

It provides ongoing support for curriculum implementation.

It ensures education staff are using the most recent version of the curriculum.

It can incorporate data related to curriculum fidelity for continuous program improvement.



What might you see?

Time and support, including materials, for proper implementation.

Education staff who have the knowledge and capacity to observe and support curriculum fidelity in both content and process.



LEARN MORE

Practice-Based Coaching Key Resources

<https://eclkc.ohs.acf.hhs.gov/professional-development/article/practice-based-coaching-pbc>

Effective Practice Resources

<https://eclkc.ohs.acf.hhs.gov/teaching-practices>

How can we explore this topic?

These exercises are designed for education staff (teachers, home visitors, and child care partners) to explore curriculum

Click on the shapes to see how to run the activity.



Walk-About Activity

Brainstorm on critical components.



Download printable version of Walk-About Activity



Group Discussion

What might this look like for us?



Download printable version of Group Discussion



Small Group Discussion

How can a program optimize curriculum fidelity?



Download printable version of Small Group Discussion

How can we explore this topic?

Walk-About Activity: Brainstorm on critical components

1. Post flip chart paper around the room in random order. On each piece of flip chart paper, list one of the critical components of curriculum fidelity:

- Fidelity of implementation
- Professional development support
- Ongoing assessment of child learning

If you have a large group, create three or four flip chart sheets for each of the three topics.

2. Break participants into groups for each flip chart on the wall. Mix groups to make a livelier conversation.

3. Have each group start with one of the critical components and brainstorm what support/resources they need to implement curriculum with fidelity.

4. Allow five to eight minutes for brainstorming and charting before having groups move to a different flip chart paper and component. Repeat so that each group is able to discuss all three components.

5. End with a large group share out and discussion.



How can we explore this topic?

Group Discussion: What might this look like for us?



The Head Start Program Performance Standards say curriculum fidelity is:

“A program must support staff to effectively implement curricula and at a minimum monitor curriculum implementation and fidelity, and provide support, feedback, and supervision for continuous improvement of its implementation through the system of training and professional development.”
HSPPS §1302.32(a)(2)

Facilitate a large group discussion. Ask participants what they think the HSPPS on curriculum fidelity might look like at the program level.

Are there examples of classrooms or home visiting and socialization strategies where curriculum is implemented with fidelity that we can learn from and share across our program?

Where do we already provide continuous quality feedback and/or how can we build curriculum fidelity into those existing feedback loops?



How can we explore this topic?

Small Group Discussion: How can a program optimize curriculum fidelity?



Break a group up into teams of three to five people.

Give them a pad of Post-It notes. Have them brainstorm as many ideas as possible for how the program could optimize curriculum fidelity.

Give teams about 15 minutes for this conversation.

Then put one or two flip chart posters in the front of the room. Have teams come up one at a time to share their ideas.

Map the group's ideas, making clusters of similar ideas and noting patterns.



Where can I get more information?

Resources

Preschool Curriculum Consumer Report

<https://eclkc.ohs.acf.hhs.gov/sites/default/files/pdf/curriculum-consumer-report.pdf>

Choosing a Preschool Curriculum

<https://eclkc.ohs.acf.hhs.gov/curriculum/article/choosing-preschool-curriculum>

Infant Toddler/Curriculum

<https://eclkc.ohs.acf.hhs.gov/curriculum>



For more information, please contact us:

ecdtl@ecetta.info or 1-844-261-3752



For Further Exploration

CURRICULUM FIDELITY HANDOUT APPENDIX

 *Curriculum Implementation Fidelity Tip Sheet*