



Child Care Partnership Coordinator Pre-Orientation

Early Head Start for Family Child Care
Demonstration Project

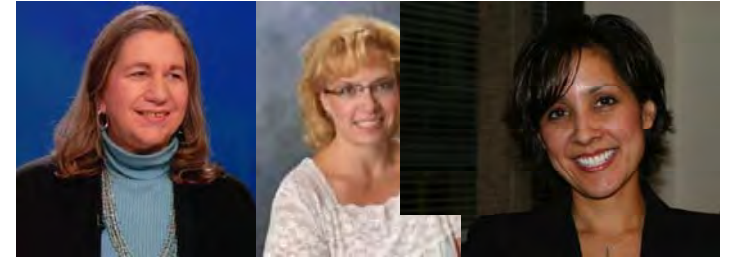
11:00 AM - 12:00 PM (EST)

Tuesday, December 21, 2010

The Partnership Begins



Blending, Braiding and Partnering to Meet the Project Goals



Welcome

- Angie Godfrey, OHS
- Kathy Edler, OCC
- Lynette Fraga, ZTT

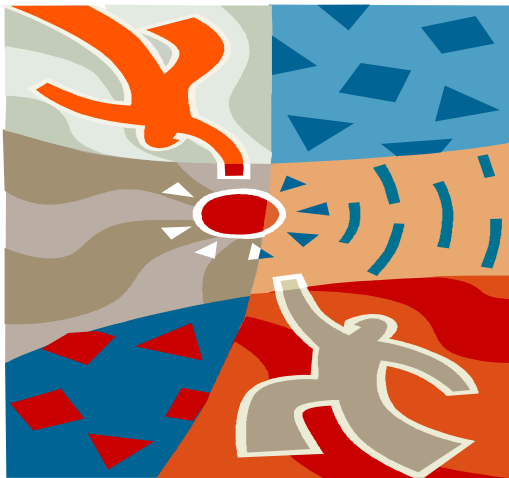
Family Child Care Project Overview



- Purpose and Goals



Roles of the Child Care Partnership Coordinator



Working in Diverse Communities

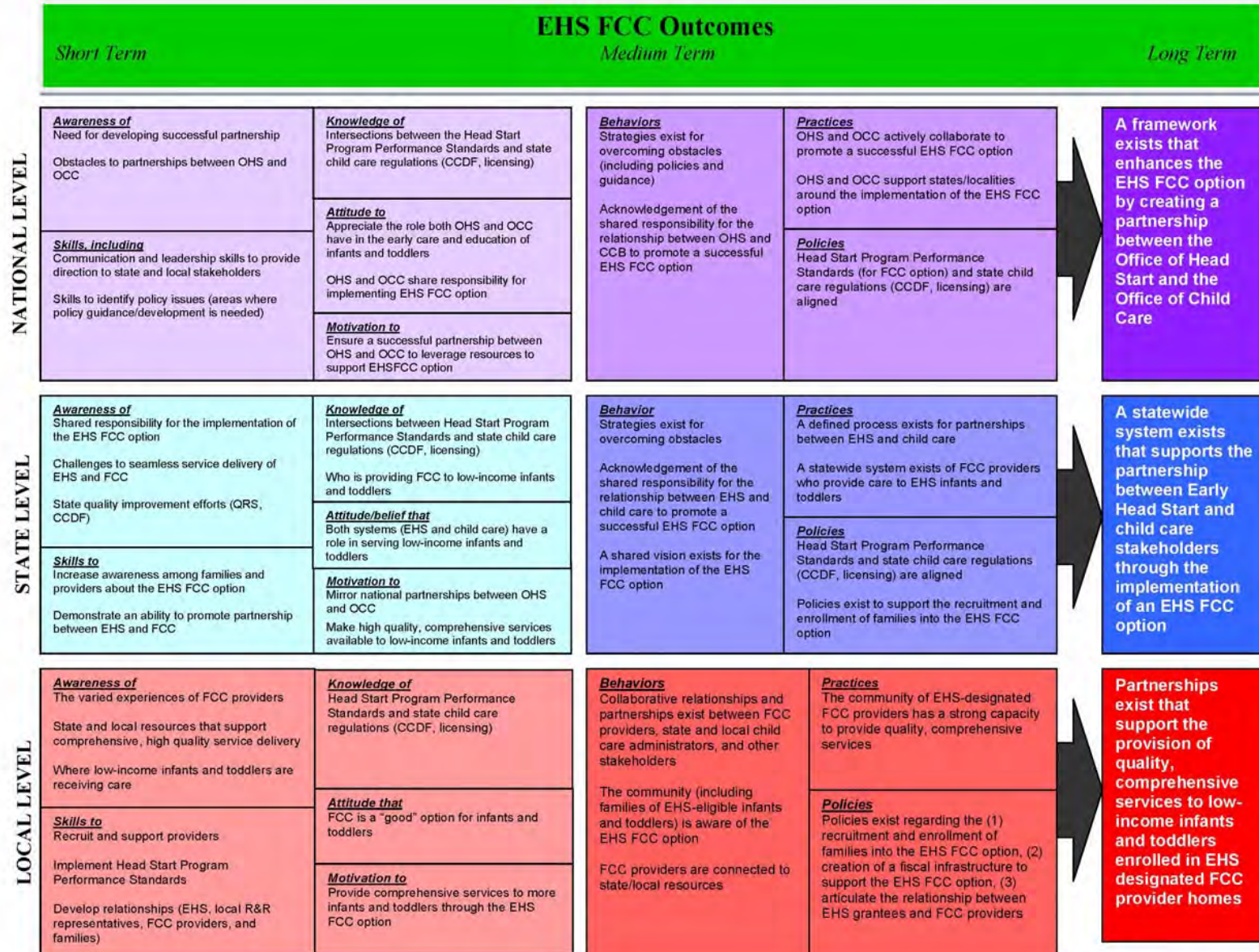
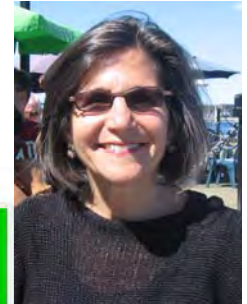


Linking Community and Services

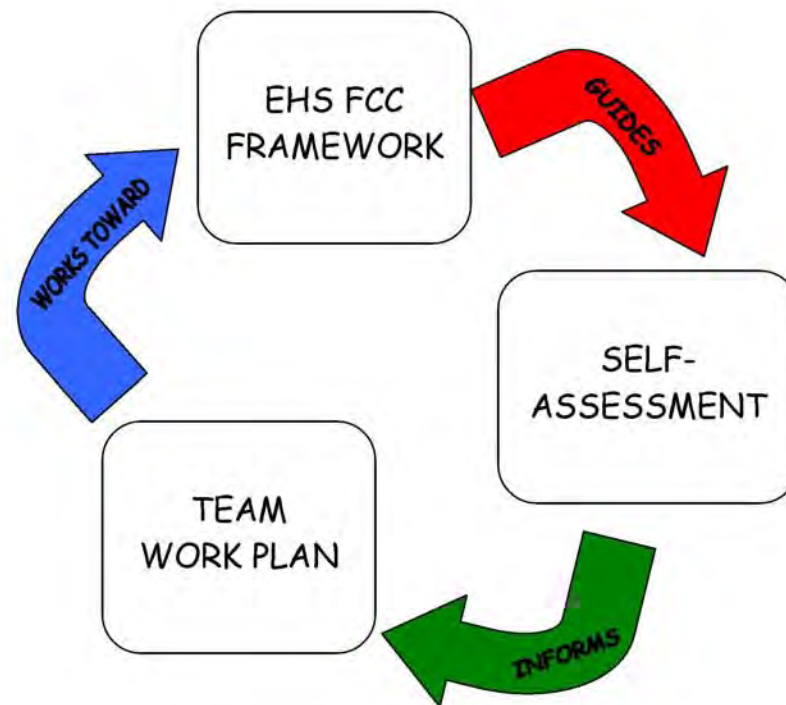


Creating Replicable Partnerships

Framework



System for EHS for FCC Implementation



January Meeting



- Self Assessment

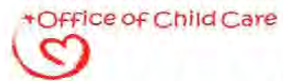
Early Head Start for Family Child Care Project Team Self-Assessment

EHS-Family/Child Care Partnership at the Local Level

+	Outcome	Indicators	Examples
✓	Awareness of the varied experiences of FCC providers.	EHS staff are aware of FCC providers serving low-income infants and toddlers in the community and some details of their services.	
	Awareness of state and local resources that support comprehensive, high-quality service delivery	EHS staff are aware of state, tribal, and local resources for training and/or technical assistance to support comprehensive, high-quality service delivery to infants, toddlers, and their families.	
	Awareness of where low-income infants and toddlers are receiving care	EHS staff are aware of options available for child care for infants and toddlers in families with low incomes.	
	Knowledge of Head Start Program Performance Standards and state child care regulations (CCDF, licensing)	EHS staff understand Head Start Program Performance Standards.	
		EHS staff understand state or tribal child care regulations (CCDF, licensing).	
		Providers in EHS-designated FCC homes understand Head Start Program Performance Standards	
		Providers in EHS-designated FCC homes understand state and tribal child care regulations (CCDF, licensing)	

January Meeting

- Work Plan



The Early Head Start for Family Child Care Project
Program Implementation Work Plan



FRAMEWORK OUTCOME	WHAT IT WILL LOOK LIKE IN OUR PROGRAM/ COMMUNITY	ACTION STEPS	PERSON(S) RESPONSIBLE	PROJECTED DATE OF COMPLETION

January Meeting

- Budget Planning



EHS Program:

CC Partner Agency:

Budget for EHS FCC Work Plan Implementation						
Action Step	Budget Item	Funding Source and Estimate			Date Funds Needed	
		EHS Budget	CCDF	Other Source (TANF, local, grants, etc.)		EHS FCC Grant
Host meeting to introduce FCC providers to EHS partnership concept	Meeting Space		\$250			2/15/2011
	Handouts				\$50	2/7/2011
	A/V equipment	\$0				2/15/2011
	Door Prizes				\$250	2/1/2011
	Food	\$150				2/7/2011
Create, print, distribute flyers to promote EHS-FCC option to CCR&R staff	Staff time	\$100	\$100			2/15/2011
	Color Printing				\$250	3/1/2011
Total Cost Projection		250	350	0	550	

Signature

Signature

Signature

EHS Team Member

CC Team Member

CCPC
1 of 1

January Meeting Logistics



- Contracts
- Travel Agent
- Hotel
- Receipts (food/beverage/transportation)
- Agenda
- Laptops

Questions



Closing Comments



Thank you for agreeing to be a
Child Care Partnership Coordinator.

